

PORT WASHINGTON MAY 2016 CALENDAR OF EVENTS

FREE Take One

Where to Go and What to Do!

www.PWcalendar.com

Alper's 8th Annual Karmacue, May 22



The 8th annual Alper's Karmacue will take place on Irma Avenue (off of Main Street) on Sunday, May 22, 12 - 4 pm. Live music, arts and crafts, games, and yummy "Eats" make Karmacue a true street festival. Hosted by Alper's True Value Hardware, with contributions from other local restaurants, vendors and organizations, 100% of Karmacue's profits go to benefit the Community Chest of Port Washington.

The signature activity at Karmacue is the Cook-Off, where teams of local backyard BBQers compete against each other to be named Port Washington's BBQ champion (determined both by independent judges and festival attendees). To participate in the cook-off, be a judge or if your business would like to participate contact Adam Novick at alpersevents@gmail.com or 767-0508.

LANDMARK ON MAIN STREET

232 Main Street • 516-767-6444 • landmarkonmainstreet.org

5/4 Afternoon T.E.A. Music Study Club of Port Washington, 2 pm Presents a delightful afternoon of classical and light classical music. Enjoy pianists, singers and instrumentalists who will share their love of familiar and original compositions. Light refreshments will be served. FREE.

5/4 Conversations from Main Street: WhyHunger: Bill Ayres & Jen Chapin, Thinking Globally, Acting Globally to End World Hunger, 7:30 pm A dialogue with four musical interludes by Ms. Chapin, on the topic of "Thinking Globally, Acting Globally: WhyHunger and the World Hunger Crisis." Dialogue and questions are encouraged. FREE.

5/7 Pushcart Players in Peter & the Wolf, 3 pm Pushcart puts its trademark spin on a beloved Russian folk tale. Classical music by Prokofiev, storytelling, puppetry and the ageless adventure of growing up comprise this masterpiece.

5/10 Arlo Guthrie's "Alice's Restaurant" 50th Anniversary Tour – SOLD OUT

5/14 Alan Cumming Sings Sappy Songs – SOLD OUT

5/25 Afternoon T.E.A. Motown Acoustics, 2 pm In the sixties, Detroit was the birthplace of the Motown sound. Kellie Nicole and Jon Price cover acoustic arrangements of R & B and the Motown era with songs of Stevie Wonder, the Four Tops, Aretha Franklin, the Temptations, and more. Dancing in the aisles is expected! Light refreshments and snacks. FREE.



PortFest 2016 - May 14

Don't you just love the feeling of the sun on your skin, the sound music and laughter, and the smell of delicious BBQ in the air? Then you don't want to miss HEARTS (Helping Enrich the Arts) fifth annual community music, arts and cultural festival – PortFest 2016 on Sat., May 14 from 11 am - 5 pm, rain or shine.

Live music, art exhibits, local musicians, dance performances, interactive hands on exhibits, and performing groups from across the school district are just some of the scheduled events and activities. Don't miss the display of student artwork. One of the largest exhibitions will be the PortFest Art Exhibit that will boast different local artist's work on display and available for purchase (a percentage of sales will go directly to HEARTS). The popular Silent Auction tent will be chock full of incredible prizes, baskets, and experiences. Join Olga Berest in the biggest, baddest Flashmob

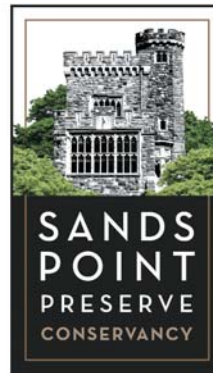
(Continued on page 8)



New Direction, New Opportunities at Sands Point Preserve

Friends of the Sands Point Preserve is now the Sands Point Preserve Conservancy. The name change reflects a new direction for the organization as it expands programs across the arts, education and services for visitors while continuing to maintain and improve the 216-acre Nassau County public park. The enhancements to the former Guggenheim Estate bring more benefits to visitors, giving them many reasons to integrate the park into their lives year-round and become active members of the Conservancy.

New leadership of the Conservancy, a non-profit 501(c)(3) organization, includes Managing Director



Beth Horn and Facilities Director Lou DiPadova.

The organization has just launched a new website to highlight new programs and activities, a full fundraising program and additional membership levels and event sponsorship opportunities. The Campaign to Save Hempstead House will raise funds for exterior restoration work on this massive Tudor-style castle, in collaboration with Nassau County.

"Our plan now is to increase awareness about this beautiful historic site," Conservancy Chairman Karli Hagedorn said.

"We're pursuing financial support from Federal, state *(Continued on page 8)*

Lauri Strauss Leukemia Foundation

5th Annual Bike Tour, May 22

Great Ride! Great Fun! Great Cause!

Enjoy the Fifth Annual Lauri Strauss Leukemia Foundation Ride for Research Bike Tour (not a race) with friends and neighbors while helping to raise money for cancer research on Sunday, May 22. There are three options: a five-mile ride/walk, a 14-mile ride or a 21-mile ride make this a great way to help raise money to beat leukemia and allied cancers.

Join as an individual, or as a team with friends, family or co-workers. Free T-shirts, refreshments

(Continued on page 4)



Memorial Day Parade & Ceremony

Monday May 30, 10 am

The parade starts on PW Blvd. and continues down Main St. to the John Philip Sousa Memorial Bandshell in Sunset Park. The Chamber of Commerce will be giving away flags to people along the parade route before the parade starts.

Save the date!

HarborFest 2016, June 5

The PW Chamber of Commerce will celebrate the 26th HarborFest Dock Day and Craft Fair on Sun., June 5. It has grown into a major LI festival on the shores and in the waters of Manhasset Bay.

(Continued on page 8)

Have a Talented Child? Harborfest Talent Show Tryouts, Friday May 6. More info page 11

Town of N. Hempstead Memorial Day Fireworks Extravaganza, Sat. May 28, 6 pm (Page 4)

VIDEOS FOR THE WEB

Weddings • Bar Mitzvahs
All Video Tape Transfers to DVD

20% DISCOUNT
WITH THIS AD

Ron Harris
PRODUCTIONS

Tel: 516-767-9636 • Cell: 516-244-1142
ronharris7@optonline.net
www.ronharrisproductions.com

2016 Community Chest Golf & Tennis Outing

Join with friends and colleagues at the Village Club of Sands Point on May 16 for the 8th annual Golf & Tennis Outing benefiting the Community Chest of Port Washington, a nonprofit organization dedicated to improving the lives of Port Washington residents.

Register on-line or download a paper application at portchest.org. Entry fees are partly tax deductible: \$225 Golf; \$110 Tennis, \$80 Lunch Only. Player fees include breakfast, day of scramble

golf and/or round robin tennis, buffet lunch with open bar, and raffle prizes.

Awards are given to winning four-some, top two tennis scorers and contest winners (closest to the pin and straightest drive). Hole-in-one prize is a three year lease on new City Cadillac, Buick or GMC car. All players get "Swag" bags.

Sponsorships are available. For more info contact the Community Chest at 767-2121 or info@portchest.org.

RELIGIOUS SERVICES & ACTIVITIES

ARCHANGEL MICHAEL GREEK ORTHODOX CHURCH 100 Fairway Dr., 944-3180, archangelmichaelchurch.org **Sun** 9:30 am (Ortho 8:30 am), Sunday School 9:30 am (Sept-June), Fellowship: 11:30 am

CHABAD OF PORT WASHINGTON 80 Shore Rd, 767-TORAH chabadpw.org **Daily (M-F)** 7am, **Sun** 9am. **Fri** 6:30pm **Saturday** Torah Study 8:45am, Service 9:30am, Children's Service 10:30am

CHEVRAT TEFILLAH 1 Sintsink Dr. W. 767-1844 **Shabbat** Service 8:30 am

THE COMMUNITY SYNAGOGUE 160 Middle Neck Rd, 883-3144 Ext. 322 www.commsyn.org **Friday Shabbat Services** 8 pm; **Second Shabbas Family Services**, 6:30 pm, **Shabbat Rocks Morning Torah Study** - 9 am **Shabbat Morning Service** 10:30 am.

FIRST CHURCH OF CHRIST SCIENTIST 402 Main St, 767-0484 **Sun** 11am, **Wed** 7pm. Reading Room open Tues-Thurs, noon-3pm

LUTHERAN CHURCH OF OUR SAVIOR 12 Franklin Ave, 767-0603 lutheranchurchportwashington.com. Services: **Sun** Worship 10am; **Tues** Kids Klub 4-5:30pm.

MT. OLIVE A.M.E. CHURCH 20 Mackey Ave, 883-3530 **Sun** Church School all ages 9:30 am; Morning Prayer 10 am; Worship Services 11 am

OUR LADY OF FATIMA 6 Cottonwood Rd, 767-0781 ourladyoffatimapw.org **Mon-Fri** Mass 8am **Sat** Mass 5pm & 7pm (Spanish) **Sun** Mass 8am, 10am (Family), 11:30 am **Holy Days** - Mass 8am & 7:30pm

PORT JEWISH CENTER 20 Manorhaven Blvd. 944-7202 portjewishcenter.org **Fri** Shabbat Service (3x month) 8 pm, **Third Fri** 7:30 pm. **First Fri** Tot Shabbat 6:30pm

SAINT PETER OF ALCANTARA 1327 PW Blvd, 883-6675 stpeterofalcantara.org **Mon-Sat** Mass 8:30am; **Sat** Church 5pm; **Sun** Church 7:30am, 10:30 am & noon, Family Mass 9 am, School Church 9:30am (Spanish).

ST. STEPHEN'S CHURCH Main St, 767-0363 www.ststephenspw.org **Sun** - Holy Eucharist 8am Family Worship 10am, Sunday School 10am, Nursery Care 10am

TEMPLE BETH ISRAEL Temple Dr, 767-1708, tbport.org **Fri** 6:45pm, **Sat** 9:30am, **Sun** 9am

THE BIBLE CHURCH 35 Campus Dr, 944-8150, thebiblechurch.us **Sun**: Sun. School (all ages) 9:45am; Sun. Morning Worship 11am; Bible Study 6:30 pm



Port Washington Music, Arts & Community Festival

SATURDAY, MAY 14, 2016

11 AM-5PM

(Rain or Shine)

SCHREIBER HIGH SCHOOL CAMPUS

Free Admission • Free Parking

Join us for a day of

Live Bands • Student Performances • Art Activities for all ages
Art Exhibits • Silent Auction • Local Food Vendors

Picnic blankets and chairs are welcome!

Proceeds benefit



HEARTS is an independent, grassroots not-for-profit 501(c)3 community organization whose mission is to add meaningful value to children's lives and our community by supporting, promoting and enriching the arts in Port Washington and its public schools.

For more information

www.heartspw.org • info@heartspw.org • www.pwportfest.org



Published by

Mainly Marketing & Design

PO Box 1439

Port Washington, NY 11050

516-883-0313

www.pwcalendar.com

www.mainlymarketing.com

Dave Allen:

dallen@mainlymarketing.com

Marie Marcellino:

mmarcellino@mainlymarketing.com

1. Sign Up for Your **FREE** Email Subscription by emailing us at **FREESUB@PWCalendar.com**

What's Happening in Port Washington, comes straight to your inbox

2. Pick up a copy at stores, restaurants and venues around town - **FREE!**

3. Like us on Facebook!

www.facebook.com/PWCalendar





*Let Us Host Your
Special Occasion*
In Our Private Party Room



516-944-3439
205 Main Street
Port Washington, NY

Mother's Day

MAY 8th, 2016

SPECIAL BRUNCH

With Complimentary Mimosa or Bloody Mary
Harpist: Noon-3pm

DINNER

10% off food after 3pm (with Mom)

Call For Reservations Today!

EVERY WEEK ALL MONTH LONG

MONDAY

Wine Down
with 1/2 Price Bottles of Wine

TUESDAY

Senior Night with Complimentary
Glass of Wine with Dinner

WEDNESDAY

Italian Pasta Night

THURSDAY

Corned Beef & Cabbage
Live Music

FRIDAY

Lobster & Seafood Night
Live Music

SATURDAY

Live Music George on the Sax

SUNDAY

Brunch with Complimentary Mimosa
or Bloody Mary / Harpist: Noon- 3pm

Join Us For
PAINT NIGHT
Call For Info & Dates

**HAPPY
HOUR**
MONDAY-FRIDAY
4-7pm



Give a Gift Of Beauty & Relaxation

FACIAL & 1/2 HOUR MASSAGE

Regularly \$130, **SPECIAL \$110**

FACIAL, MANICURE, SPA PEDICURE

Regularly \$122, **SPECIAL \$100**

More Specials on www.SpaOnTheWharf.com



At Inspiration Wharf
405 Main Street, Port Washington, NY

516-767-9670

www.spaonthewharf.com

PayPal • MC • Visa • Amex



GIFT CERTIFICATES AVAILABLE

HOURS: Tuesday - Saturday 9am-6pm • Sunday 9am-3pm • Monday - CLOSED

Community Wide Mitzvah Day- Sunday May 15

Please join the Jewish and surrounding communities of Port Washington work together on over 40+ volunteer projects and drives, in one day! This event is extremely popular and well attended by over 800 volunteers, 6 synagogues, 5 rabbis, 2 cantors with over 20 sponsors. Kick off starts at 9:30 am at The Community Synagogue, 160 Middle Neck Road, with a free bagel breakfast. Everyone receives a Mitzvah Day t-shirt and project information.

Mitzvah projects, 10:30 am – 1 pm, provide opportunities to volunteer in over 40 Mitzvah projects and drives. The day culminates at Israelfest at Bar Beach, North Hempstead Beach Park, 1 pm, admission and parking are free. Go to www.comm-syn.org to read the complete brochure.

MAY PORT WASHINGTON SCHOOLS

2 MON AAPW Mtg 7:30 pm Schreiber Fac. Caf	Guggenheim HSA Mtg 10 am APR
3 TUES Board of Ed. Budget Hearing & Tenure Mtg. 7:30 pm Schreiber Aud	14 SAT PORTFEST Schreiber Field
Daly HSA Meeting 10:30 am APR	16 MON Sousa Spring Concert 7:30 pm Aud
3 TUES - 4 WED Manorhaven Spring Plant Sale	16 MON - 18 WED Manorhaven Book Fair
4 WED Weber HSA Mtg 7 pm Weber Library	17 TUES School Budget Vote & BOE Election 6 am - 10 pm Weber APR
Schreiber HSA Mtg 7 pm Weber Comp Lab	Manorhaven Spring Concert 7:30 pm Caf
Evening Budget Info Mtg 8 pm Weber Library	BOE Meeting 10:30 pm Weber APR
4 WED - 5 THUR NYSSMA Level I-IV Festival Schreiber	18 WED Schreiber National Honor Society Induction 7 pm Aud
5 THUR Salem Plant Sale	19 THUR Schreiber Spring Concert II 7:30 pm Aud
AGATE Meet the Candidates 7:30 pm Weber Lib.	20 FRI Daly Coffee w/the Principal 9:30 am APR
5 THUR - 6 FRI Sousa Mother's Day Fair	Schreiber Gambol Fundraising Event 7:30 pm (Off-site)
6 FRI Daly and Guggenheim Spring Plant Sale	23 MON Schreiber Tri-M Induction 7 pm Aud
SEPTA Second Cup 9:30 am Coffee'd	24 TUES Sousa Conversations w/Dr. Meoli 8:15 am MPR
Mandatory SHS Parent/Student Gambol Mtg 7 pm	Daly Book Fair Family Shopping Night 5:30 pm
7 SAT Guggenheim Garage Sale	Schreiber Science Symposium 6 pm Caf/Aud
9 MON Parents' Council Budget Info Mtg 9:30 am PW Public Library	Guggenheim Spring Concert 7:30 pm Caf
Mandatory SHS Parent/Student Gambol Mtg 7 pm	24 TUES - 26 THUR Daly Book Fair
Weber Spring I Concert Grade 8 7:30 pm Aud.	25 WED Schreiber Department Awards Ceremony 7 pm Aud
9 MON - 12 THUR Salem Book Fair	Daly Spring Concert 7:30 pm Gym 9:30 am
10 TUES Weber Spring II Concert Grade 7 7:30 pm Aud.	26 THUR Salem Beginner Concert
11 WED Manorhaven Coffee w/Prin. Cohen & PTA Mtg 9:15 am MPR	27 FRI Superintendent's Day Conference Day - School Closed
Salem Art Show/Book Fair Night 6 pm	30 MON Memorial Day - School Closed
12 THUR Guggenheim Book Share	
Safety & Substance Abuse Task Force Mtg 12:15 pm Daly Annex	
Weber Spring III Concert Grade 6 7:30 pm Aud.	
13 FRI Sousa HSA Mtg 8:15 am APR	
Salem HSA Mtg 9:30 am Cafe	

PORT WASHINGTON SCHOOL DISTRICT
Administration Office 767-5000
www.portnet.k12.ny.us

Town of North Hempstead Memorial Day Fireworks Extravaganza, May 28

Town of N. Hempstead Supervisor Judi Bosworth and the Town Board are pleased to announce that the Memorial Day Fireworks and Commemoration Ceremony will be held at North Hempstead Beach Park on Sat., May 28, at 6 pm, with fireworks starting at dusk.

This year's event will feature two bands; Unforgettable Fire, a U2 tribute band, and FiveStone, playing popular songs from the 80s. The commemoration ceremony will include a program honoring those who give their lives in defense of freedom worldwide. The ceremony will include U. S. Marine Corps, 2nd Battalion; 25th Marines Color Guard, a firing detail by the US Volunteers of America, 11th Regiment.

Save the date:

Kiwanis Club's 1st Annual Eleanor Lalena Memorial Golf Classic, July 18

Save the Date for the Kiwanis Club of Manhasset-Port Washington Foundation's 1st Annual Eleanor Lalena Memorial Golf Classic to be held Monday, July 18 at the North Shore Country Club.

The outing will benefit the many charities the Foundation supports including Pediatric Trauma Kit Program, YAI's National Institute for People with Disabilities and the needs of the youngsters and seniors in our communities.

For more information, please contact John Lalena at 528-8486 or email john.c.lalena@gmail.com.

RESTAURANT EVENTS & ENTERTAINMENT

TUESDAYS
LENNON'S PUB 105 Main St. 883-4350
Pub Quiz Nite- 8:30pm

AYHAN'S MEDITERRANEAN MARKETPLACE 293 Main St. 767-1400
Live Jazz by Port Jazz Project

WEDNESDAYS
BISTRO ETC. 43 Main St. 472-7780
Wednesday Night Live

THURSDAYS
SULLIVAN'S QUAY 541 PW Blvd. 883-3122
Karaoke Every Thurs 9:30 pm 'til late

MARCO'S WATERFRONT GRILL
43 Orchard Beach Blvd. 883-5600
Karaoke Every Thursday 7-10pm
MarcosWaterfrontGrill.com

Check restaurant websites for last minute changes in schedules

FRIDAYS
DOLPHIN BOOKSHOP CAFE
299 Main St. 767-2650
All types of music. Free. 7 pm

FINN MACCOOL'S 205 Main St. 944-3439
Live Music

MARCO'S WATERFRONT GRILL
43 Orchard Beach Blvd. 883-5600
Live Music Every Friday

SATURDAYS
FINN MACCOOL'S 205 Main St. 944-3439
George on the Sax

SUNDAY
FINN MACCOOL'S 205 Main St. 944-3439
Harpist 12 - 3 pm

PW VARSITY SPORTS

5/2 4:30PM G Track East Meadow	5/9 4:30PM Badm. Roslyn HS
4:45PM Baseball Hicksville*	4:45PM Baseball Herricks HS*
5/3 4:30PM B Track Herricks	5/11 4:30PM B LAX Uniondale HS
4:30PM G LAX Plainview JFK HS	4:30PM B Tennis Syosset HS
4:30PM Softball Freeport*	4:45PM Baseball Herricks HS*
5/5 4:30PM Baseball Hicksville*	5/13 4:30PM B LAX Hicksville HS
5/6 4:30PM B Tennis Great Neck S HS	4:30PM B Tennis Jericho HS
5/7 4:45PM Softball Hicksville HS**	
5/9 4:30PM G LAX Baldwin HS	

*Guggenheim Elementary

**Port Washington PAL Field, 325 Main St

5th Annual Bike Tour, May 22

(Continued from page 1)

and raffle ticket (while supplies last). Additional raffle tickets can be purchased during the event.

The event starts at Soundview Marketplace, Shore Road. Check the website www.lslf.org for start times and registration fees, or to form or join a team.

The Lauri Strauss Leukemia Foundation, is a non-profit humanitarian organization, which honors the memory of Lauri Strauss, who succumbed to Acute Myelogenous Leukemia at the early age of 26. Its mission is to find a cure for Leukemia, Lymphoma, Hodgkin Disease, Myeloma and other cancers by means of awarding Discovery Grants to innovative developmental research projects at many of our countries most respected medical institutions. They provide for palliative care, conduct marrow donor drives, and promote cord blood donations.



YUMMY GYRO

HEALTHY • QUICK • TASTY

**APPETIZERS • SANDWICHES • SOUVLAKI
PITA SANDWICHES • PLATTERS • HOT SOUPS
FRESH SALADS • SPECIALTY WRAPS • BURGERS
HERO MELTS • PITA PIZZAS • DESSERTS**

TAKE OUT SPECIAL

**Family Style
Whole Rotisserie
Chicken Dinner** **\$21⁹⁵**

*Includes: side of rice, grilled vegetables,
Greek salad, pita bread and tzatziki sauce
(Not to be combined with any other offer)*

MOTHER'S DAY SPECIAL

Celebrate Mother's Day All Month Long!

**FREE Sangria for Mom
During May**

Just mention the Port Washington Calendar or bring in this ad.

FREE DELIVERY 7 DAYS

PORT WASHINGTON

82 Main Street

Phone: 516-708-9020 Phone/Fax: 516-708-9021

WILLISTON PARK

579 Willis Avenue

Phone: 516-739-7600 Phone/Fax: 516-739-7609

Check us out on  

yummygyro.com



\$2 OFF

\$20 Purchase

YUMMY GYRO

Cannot be combined with any other specials
Expires 6/5/16

\$3 OFF

\$30 Purchase

YUMMY GYRO

Cannot be combined with any other specials
Expires 6/5/16

\$5 OFF

\$50 Purchase

YUMMY GYRO

Cannot be combined with any other specials
Expires 6/5/16



Summer Camp
Glee Club Camp | Rock Band Camp
Art Camp | Music Video Camp
Music Camp for Special Needs

\$75 OFF
WITH COUPON

School of Music+Art
Summer Programs
June 27 - August 27

WELCOME!
All Ages & Levels

Summer HOT Private Lessons

PIANO GUITAR DRUMS STRINGS WOODWIND

\$50 OFF
WITH COUPON

Port Washington 883-5000 Syosset 802-5885 Rockville Centre 442-2230

www.schoolmusicart.com

START YOUR SPRING WITH YOGA

om sweet **tom** YOGA



\$39 FOR NEW STUDENTS
2 WEEKS UNLIMITED YOGA

OVER 50 CLASSES A WEEK!
SIGN UP TODAY!

516-944-YOGA
12 Irma Avenue, Port Washington, NY
info@omsweetomyoga.com
www.omsweetomyoga.com

LANDMARK
ON MAIN STREET

AFTERNOON T.E.A.WED. MAY 4
MUSIC CLUB OF PORT WASHINGTON 2 PM

CONVERSATIONS FROM MAIN ST.WED. MAY 4
WHYHUNGER WITH JEN CHAPIN 7:30 PM

PETER AND THE WOLF.....SAT. MAY 7
3 PM

AFTERNOON T.E.A.WED. MAY 25
ACOUSTIC MOTOWN 2 PM

BOX OFFICE: 516-767-6444
www.landmarkonmainstreet.org

SUNDAY	MONDAY	TUESDAY	WEDNESDAY
1 Pianist: Fei-Fei Dong PW Library 3 pm (Page 10)	2 Film: <i>Mostly Martha</i> PW Library 7:30 pm (Page 10)	3 Chess Players PW Library 2 - 4 pm (Page 10)	4 Afternoon T.E.A. Group of Port Landmark on Main Street (Pag WhyHunger v & Jen Landmark on Main Street (Pag
8 Mother's Day Tea Sands Point Preserve 3-5 pm (Page 11) Film: <i>Her Majesty, Love and Her Jungle Love</i> PW Library 2 pm (Page 10) Mothers Day	9 Film: <i>The Lunchbox</i> PW Library 7:30 pm (Page 10)	10 Chamber of Commerce Ayhan's Fish Kebab 8 am (Page 11) Free Hypertension Screening PW Library 11 am - 2 pm (Page 10) Arlo Guthrie Landmark on Main Street 7:30 pm (Page 1)	11 Book Dis The Constel Phen PW Library (Pag
15	16 Community Chest Golf Outing Village Club of Sands Point (Page 2)	17 School Budget & Board of Education Vote Weber Middle School 6 am - 10 pm (Page 4)	18  JUNE ISSU
22 Freeport Community Band PW Library 3 pm (Page 10) Chamber Players International Sands Point Preserve 3-5 pm (Page 11) Lauri Strauss Bike Ride Soundview Shopping Center (Page 1)	23 Afternoon at the Opera: <i>La Fanciulla del West</i> PW Library 3 pm (Page 10) Blood Drive PW Library 2:30 - 8:30 pm (Page 10)	24 Film: <i>Pawn Sacrifice</i> PW Library 7:30 pm (Page 10)	25 Afternoon Motown Landmark on Main Street (Pag
29 Last Quarter	30 Memorial Day Parade Main Street 10 am (Page 1) Memorial Day	31 Film: <i>The Gift</i> PW Library 7:30 pm (Page 10)	

SPRING SPECIAL!



HEFFERIN TREE & LANDSCAPE CONTRACTING INC.

Comprehensive Tree Inspection & Report

YOU RECEIVE:

- Inspection by a Registered Arborist
- Written Description of Findings & Proposed Remedies/Care/Instruction
- A \$50 COUPON Towards Hefferin Tree Services

\$49.95

PORT WASHINGTON NY • 516-944-6941

QUALITY CLEANOUTS

Downsizing...Decluttering...Packing/Unpacking...
Emptying Out Services to fit your needs



Servicing Long Island, Brooklyn & Queens

Donna Furino 516-761-1417
dfurino@qualitycleanoutsny.com
www.QualityCleanoutsNY.com

WEDNESDAY THURSDAY FRIDAY SATURDAY

<p>5</p> <p>A. : Music Study t Washington ain Street 2 pm (Page 1)</p> <p>with Bill Ayers Chapin n Street 7:30 pm (Page 1)</p>	<p>6 <small>New Moon</small></p> <p>HarborFest Children's Talent Show Tryouts Mertz Building 3-7:30 pm (Page 11)</p> <p>Long Island Music Hall of Fame They're From Here! PW Library 7:30 pm (Page 2)</p>	<p>7</p> <p>Pushcart Players: Peter & The Wolf Landmark on Main Street 3 pm (Page 1)</p>	<p>12</p> <p><small>Cinco de Mayo</small></p>
<p>12</p> <p>Discussion: ation of Vital omena y 7:30 pm (Page 10)</p>	<p>13 <small>First Quarter</small></p> <p>Film: Effie Gray PW Library 7:30 pm (Page 10)</p>	<p>14</p> <p>Next Chapter: Current Events PW Library 10 am (Page 10)</p> <p>PortFest Schreiber HS Field 11-2 pm (Page 1)</p> <p>Sands Point Preserve Cleanup Sands Point Preserve 12:15 - 2:15 pm (Page 11)</p>	<p>19</p> <p>3rd Thursdays @ 3: Great Themes in European Paintings, Part 2 PW Library 3 pm (Page 10)</p>
<p>26</p> <p>on T.E.A. : Acoustics ain Street 2 pm (Page 1)</p>	<p>20</p> <p>Sandwiched In: Landmarks and Historic Sites of Long Island PW Library 12:10 pm (Page 10)</p>	<p>21 <small>Full Moon</small></p> <p>Dodge Homestead Spring Fling Dodge Homestead 1-5 pm (Page 11)</p> <p>Hunt for Fossils Sands Point Preserve 11 am (Page 11)</p> <p>Happy Birthday Gifts Gemini May 21 - June 21 www.zodiacgifts.com</p>	<p>27</p> <p>Scrabble Players PW Library Every Friday 2-5 pm (Page 10)</p> <p>Soundswap Hootenany PW Library 7:30 pm (Page 10)</p>
<p>28</p> <p>ToNH Memorial Day Fireworks Extravaganza ToNH Beach Park 6 pm (Page 4)</p>			



The staff of Port Washington Calendar has made every effort to provide current, accurate information in this issue. We encourage our readers to call the sponsors to confirm schedules and events.

Let Us Know of Your Organization's Events

We publish what we feel will be of interest to our readers. Call Marie at 883-0313 or email your information to editorial@pwcalendar.com.

LAFHEY FINE HOMES
LAFHEY.COM

Happy Mother's Day

215 Main Street
Port Washington, NY
516-883-7780 Ext. 218
516-639-1172 cell
ekatz@lafhey.com
www.EdieSellsLongIsland.com

Edith E. Katz
CBR, SRES, CLHMS
Licensed Associate RE Broker
LUXURY PORTFOLIO
FINE PROPERTY COLLECTION

Dr. Mary's CHIROPRACTIC & WELLNESS CENTER
Specializing in Enzyme Nutrition Therapy

Dr. Mary Gmiterek-Apat

17 ROCKWOOD AVE.
(Across from Daly School)
www.drmarychiropractic.com
516-944-3615

My Little World Daycare, Inc.
"Where learning is fun"

Arts & Crafts • Math & Reading
Music & Dance • Bi-lingual
Breakfast, Snack & Lunch Available
Ages Six Weeks to 12 Years Old

LOCATED AT
1165 Port Washington Blvd.
Port Washington, NY

Contact Myriam Signorini
516-883-1723 • 917-406-8141
Licensed by New York State LID#2350086FDC
www.mylittleworlddaycareinc.com

La Parma ★★★★★
On the Bay

ITALIAN RESTAURANT

Book Your Parties,
Business Functions & Other Private Events

FOLLOW US ON THE WEB AT
www.LaParma.com
516-439-4960
415 Main Street • Port Washington

Harborfest Vendors:



PORT WASHINGTON CALENDAR
www.pwcalendar.com

Advertise in the June issue and receive a 10% DISCOUNT off our regular rates and a 25-WORD PROFILE in the June HarborFest issue.

Not-for-Profits should see our special discounted NFP rates.

CLOSING DATE FOR JUNE ISSUE: MAY 18

TO ADVERTISE OR FOR MORE INFO Call Dave Allen 883-0313

fresh local fish • fried seafood • lobster rolls



Open May 5 For The Season

Brewer Capri Marina West
86 Orchard Beach Boulevard
Port Washington
516-883-8330
www.butlersflat.com





Spring is Here!

Not a very original head, but it certainly is true when you look at the myriad of happenings listed in this issue.

It seems that when organizations look at their planning calendar, May is the chosen month for events. It's enough to keep every local civic minded person hopping. This issue provides information on PortFest, Alper's Karmacue, The Lauri Strauss Foundation Bike Tour, good things at Landmark, The Dodge Homestead Spring Fling and The Community Chest Golf Outing. Add in the national and not-so- national holidays: Memorial Day (and the Parade), Cinco De Mayo and Mothers' Day (the #1 Day for our restaurants). By this time you have a pretty full schedule. But, do not forget the School Board Budget Vote and all those Port Washington Public Library events.

Just about the time you think things will quiet down, we offer a few "Save the Dates" for June & July, including HarborFest, the Kiwanis Golf Outing in memory of Eleanor Lalena, Tours of Execution Rocks and all those graduations and weddings.

With all of this, the golf courses are calling and so are the tennis courts, softball and soccer fields.

Now that I have reminded you of all of this, I seem to have three ways of ending this column. Here are all three - you choose.

This should be enough to break up the cacophony of political rhetoric.

Do not forget spring cleaning, plantings and household repairs you promised to do all winter.

It's a great time to live in Port!

Dave Allen
Dave@PWCalendar.com

PortFest May 14

(Continued from page 1)

in the history of Port Washington to THRILLER! To get a sneak peek, go to facebook.com/heartspw.

Admission to PortFest is FREE and there will be plenty of free parking at the Schreiber High School Campus. For a schedule of events or for a link to make a donation, go to pwportfest.org.

To volunteer or to make a donation,

go to heartspw.org or facebook.com/heartspw, or email heartspw@gmail.com.

Port Washington is a community that values creativity, self-expression, and the importance of a quality arts education. In a time of tight school budgets and emphasis on testing, please support the pursuit of imagination, inspiration, and soul.



Twin Pines Reopening Soon

We have been cleaning up, cleaning out and thanks to our volunteers, the store is looking 100% better.

We have an entire room devoted to childrens' clothes, toys, games and more. And another devoted to ladies' clothes and accessories... and a new section devoted to menswear.

**And within the next few weeks we will be ready for our
Grand Reopening!**

In the meantime Twin Pines is looking for volunteers - especially people with expertise in crystal, clothing, books, household appliances, fabrics and collectables.

But mostly, Twin Pines is looking for energetic and dedicated volunteers to continue the tradition of assistance to those with limited means.

Interested?

Send an email to Marie@TwinPinesPW.org.

In the meantime thank you for your patience and we are looking forward to seeing you soon.

382 Main Street • 516.883.9777

Sands Point Preserve

(Continued from page x)

and local funders as well as historic preservation organizations to augment Nassau County's support and our own fundraising work."

Improvements in landscaping, exterior site lighting, and building maintenance are planned. "The importance of maintaining a safe environment and creating a welcoming experience to our visitors cannot be understated," DiPadova said, "As we continue to meet the challenges to maintain the Preserve's 216 acres, castles and out-laying buildings, it is truly rewarding to be a part in upholding its legacy."

See ad and listings on page 11 for the schedule of upcoming events and activities.

Docent-led tours of Hempstead

House, the former home of Daniel and Florence Guggenheim, are now available year-round on Saturdays and Sundays. Guided tours of Falaise, Harry Guggenheim's French-Norman-style chateau, run from May 19 - Nov. 20.

The new 12-month membership program offers free admission, discounts for select events and programs and additional benefits year-round. For more information about membership and sponsorship opportunities, as well as the calendar of cultural arts, fitness, and educational programming, visit www.sandspointpreserve.org, call 571-7901 or stop by the Gate House at 127 Middle Neck Road, open daily from 8 a.m.

Make Your Reservations for Tours of Execution Rocks



Get a first hand view of this historic site! Reservations are now being taken for tours of Execution Rocks, **Sundays, June 5 and June 19, at 9:30 am.**

Guests must be able to climb a ladder from the boat on and off the island. No children under 12. Pack a lunch and wear appropriate clothing and sneakers (no skirts). Limited seating on the boat. For reservations call 215-906-5103 or email morrisoncraig@yahoo.com. \$75 pp. Boat leaves from the PW Town Dock next to Louie's on Main Street - returns approx 1pm. Be there by 9:30 am to check in or lose your reservation. www.lighthouserestorations.org.

Save the Date for HarborFest - June 5th

(Continued from page 1)

HarborFest offers all day fun for the whole family. Visitors can go out on the bay aboard the schooner SoundWaters or the PW Water Taxi, or by kayak. The craft fair with 100 vendors lines lower Main Street. The Children's Fun Park with a stage for a talent show and entertainment just for children, carnival games, crafts, hands-on science fun, sports, a Treasure Hunt and the model boat regatta. PW Fire Department's Fire Boat will be on display. The Enviro-Expo, a prominent part of every HarborFest, has educational exhibits by many LI organizations. This year's school environmental program is "Our Plastic World: Recycling is Not the Answer," organized and taught by Patti Wood of Grassroots Environmental Education.

The BID trolley provides free rides to and from the festival. Entertainment at the Tugboat is provided by the nautical singing group Stout, and encore performances by the cast of the Red Stocking Revue, plus performances by World Tae Kwon Do, The Fred Astaire Dance Studio and others.

The Pride of Cow Bay Tugboat nautical museum will unveil a new exhibit of photos, "The Water's Edge," by Tab Hauser. Art in the Park with The Art Guild is back with beautiful displays and free workshops. Of course, many wonderful merchants and organizations have booths on the dock.

The HarborFest Fabulous Food Court offers gourmet selections from Port's finest restaurants, as well as popular and delicious festival food.

Message Envy	Blue Ribbon Travel	League of Women
Port Washington	Danceworks, NY	Voters
Calendar	Roslyn Savings Bank	PGEES Enterprises
Twin Pines	Knickerbocker Bay Club	Sylvan Learning Center
The Art Guild	Anthony's World of	Coldwell Banker
Port Washington Federal	Floors	
Credit Union	Friends of Port Rowing	

As of presstime these organizations have committed to booth exhibits at Harborfest:

There is something for everyone at HarborFest, so come early, come hungry and spend the day! For more information, call 883-6566 or email office@pwcoc.org.



O'Hara's

Ale House & Grill

"More Than Just A Pub"

38 CRAFT BEER

With Old & New Favorites

Our Already

**FAMOUS
10oz & 20oz
BURGERS**

With Free Toppings

**LONG ISLAND'S
BEST WINGS!**

Celebrate With Us CINCO DE MAYO

**THURS
MAY 5th**

\$1.00 Tacos

50¢ Wings

1/2 Price José Cuervo Shots

1/2 Price Corona Bottles

\$5.00 Frozen Margaritas

\$2.00 Coors Bottles

Mariachi Band

HAPPY HOUR

Monday-Friday 3-7pm

Half Price Appetizers*

Half Price Well Drinks*

Half Price Beers & Wine*

\$5 OFF All Martinis*

*AT THE BAR ONLY

**TRIVIA NIGHT
TUESDAY**

With Prizes

MOTHER'S DAY - SUNDAY, MAY 8th

Four Course Price Fixe Menu

Includes glass of Champagne

OPEN 7 DAYS NOON-2:00AM • SERVING LUNCH & DINNER

Eight HD TVs! WATCH YOUR FAVORITE SPORT EVENT HERE

516-321-9254

611 Port Washington Boulevard, Port Washington, New York 11050

www.OharasAleHouseAndGrill.com  Follow Us On Facebook

Bring This Coupon & Save Even More!

20% OFF ENTIRE MENU*

MONDAY-FRIDAY • NOON-3:00PM

*With this Coupon and not to be combined with any other offer. Expires 8/31/16 *One Coupon per table

O'HARA'S ALE HOUSE & GRILL 611 Port Washington Blvd • Port Washington NY

HarborFest

Dock Day & Craft Festival

Sunday, June 5, 2016
10 AM – 5 PM



HarborFest is Port Washington's Annual Celebration of Our Nautical Heritage and Environmental Awareness

FREE ADMISSION + Craft Fair + Tall Ship Cruises + Fire Boat Water Taxi + Bay Tours + Entertainment + Nautical Museum Enviro-Expo + Vendor Booths + Children's Fun Park + Fun Stage Treasure Chest + Model Boat Regatta + Food Court Trolley + Art In The Park + Much More!

PLUS:

Sunset Cruise aboard the schooner SoundWaters:
Saturday, June 4, 6 – 8PM

For all SoundWaters tickets: harborfestcruises.eventbrite.com

FREE Trolley and Shuttle Buses 10 AM – 6 PM from the Railroad Station & Manorhaven Park to the Town Dock.

HarborFest is Presented by:



Admiral Sponsor:



For information call 883-6566 or email office@pwccoc.org

MAY AT THE PORT WASHINGTON LIBRARY
516-883-4400 • www.pwpl.org

EXHIBITS

KAREN AND ED ADLER GALLERY: JOAN MILLER: Lyrical Abstractions. May 3 - 30.

IN THE VOGEL PHOTOGRAPHY GALLERY PCL: 37th Annual Exhibition. May 4-31. "Musical Images," a multimedia presentation, will be featured on Wed., May 11 at 7:30 p.m.

EVENTS

1 SUN FEI-FEI DONG. The pianist will perform selections from Scriabin, Lieberman, Schumann and others. 3 p.m.

2 MON FOOD FILM FESTIVAL continues with *Mostly Martha* (2002-105 min) German chef Martha lives a loveless life until the arrival of her orphaned niece and a sympathetic cook. In German w/subtitles. 7 p.m.

3 TUES CHESS. Join us for a game! Tuesdays in May from 2:30 to 4 p.m.

ADULT COLORING. Tuesdays in May. The adult coloring craze comes to Port! These informal sessions are great for stress relief and getting to know your neighbors. 7 p.m.

FILM: *Mistress America* (2015-84 min.). The life of lonely college freshman Tracy is turned upside down by her impetuous, adventurous soon-to-be stepsister. 7:30 p.m.

4 WED GREAT BOOKS: Jane Austen's *Northanger Abbey*. 1 p.m.

TECHDESK. Wednesdays in May, 2 - 4 p.m., bring your tech questions and devices to the South Wing for one-on-one assistance. Learn to use online resources and get tips on how to make the most of your gadgets.

CONVERSATIONS FROM MAIN ST.: BILL AYRES AND JEN CHAPIN. See page 1. No tickets are necessary. At Landmark on Main Street. 7:30 p.m.

5 THUR FREE ONLINE RESOURCES THAT ANYONE CAN USE! Tony Truquardo offers a look at some of the best free online research, reference, freeware, entertainment and money-saving resources. 3 p.m.

DIRECTOR'S CUT. Film expert John Bosco will screen and discuss *Room* (2015-118 min.). Kidnapping victim Joy struggles to make a life for her son in the single room provided by their captor. 7 p.m.

6 FRI SANDWICHED IN: "Artists and Springtime." Professor Thomas Germano explores the ways in which great artists depicted and were inspired by the beauty of spring. 12:10 p.m.

SCRABBLE. Join us for a game every Friday. 2 - 5 pm

THE LONG ISLAND MUSIC HALL OF FAME: "THEY'RE FROM HERE!" This multimedia event will feature rare footage from LIMHoF gala ceremonies and a look at prominent inductees. 7:30 p.m.

8 SUN A LOVE DOUBLE FEATURE: *Her Majesty, Love* (1931-75 min.). Playboy Fred falls for cabaret barmaid Leah. Also, *Her Jungle Love* (1938-77 min.). A downed pilot is enchanted with an island girl. 2 p.m.

9 MON VIRTUAL VISITS: "The J. Paul Getty Museum, Part 2." Join Ines Powell for this illustrated lecture. 2:30 p.m.

FOOD FILM FESTIVAL concludes with *The Lunchbox* (2013-104 min.). A mistaken delivery in Mumbai's lunchbox delivery system connects a lonely young housewife with an older man preparing to retire. In English, subtitled Hindi. 7 p.m.

10 TUES HYPERTENSION SCREENING: Free blood pressure screening conducted by St. Francis Hospital. 11 a.m. to 2 p.m.

WINTER BROOK: "What Is Mediumship?" 7:30 p.m.

11 WED FICTION BOOK DISCUSSION: *The Constellation of Vital Phenomena* by Anthony Marra. In early-2000s Chechnya, two doctors try to protect a girl whose father has been abducted by Russian forces. 7:30 p.m.

12 THUR RESEARCH INVESTIGATORS' SCIENCE EXPO (RISE). Join us for a visit from participants in this year's RISE, an annual competition held by the Young Investigators Society at the Feinstein Institute. 7:30 p.m.

13 FRI SANDWICHED IN FILM: *Why Be Good?* (1929-81 min.). Kelly is a store clerk by day and a flapper by night. She sparks with wealthy playboy Winthrop Peabody, Jr., who turns out to be her new boss! 12:10 p.m.

GREAT STREETS OF NYC: "Broadway: The Street That Created the Musical." Join Prof. Ronald Brown for a virtual stroll along the longest and oldest street in the city. 3 p.m.

FILM: *Effie Gray* (2014-109 min.). When Victorian-era art critic John declines to consummate his marriage to young Effie, she seeks affection from his protégé. 7:30 p.m.

14 SAT NEXT CHAPTER: Discuss current events. Bring your opinions! 10 a.m.

JOB SEARCH STRATEGIES WORKSHOP. Learn how to optimize your career search and increase your odds of finding successful employment. 10 a.m. Sign up: 883-4400, ext. 111.

RESUME & COVER LETTER WORKSHOP. Small group workshop for job seekers. 1 p.m. Sign up: 883-4400, ext. 111.

16 MON AFTERNOON AT THE OPERA: *La Fanciulla del West* introduced audiences to some Puccini's most sumptuous music. Join Prof. James Kolb for this audio/visual lecture. 3 p.m.

17 TUES MEET REBECCA SCHIFF. *The Bed Moved* offers a singular view of growing up (or not) and finding love (or not). 7:30 p.m.

18 WED GREAT BOOKS: Italo Calvino's *The Non-Existent Knight*. 1 p.m.

LIBRARY BOARD OF TRUSTEES MEETING. The public is invited at 7:30 p.m.

19 THUR NON-FICTION BOOK DISCUSSION: *The Prize: Who's In Charge of America's Schools?* by Dale Russakoff. A behind-the-scenes look at the race to reform Newark's failing school system. 1:30 p.m.

3RD THURSDAYS at 3: "Great Themes in European Paintings, Part 2." Marc Kopman of LIU Post will examine works that range from the early Renaissance to the early 20th century. 3 p.m.

FILM: *Bridge of Spies* (2015-141 min.). During the Cold War, American lawyer James Donovan (Tom Hanks) is recruited to defend an arrested Soviet spy. A Steven Spielberg film. 7 p.m.

20 FRI SANDWICHED IN: "Landmarks and Historic Sites of L.I." Ralph Brady discusses Nassau and Suffolk's most historic locations. 12:10 p.m.

FILM: *Star Wars: Episode VII The Force Awakens* (2015-136 min.). Can a ragtag group of heroes save the galaxy from the villains of the First Order? J.J. Abrams' movie stars Adam Driver, Daisy Ridley, John Boyega, and some old friends. 7 p.m.

22 SUN FREEPORT COMMUNITY BAND. Established in 1911, the all-volunteer band has over sixty members from Nassau, Suffolk, Queens & Brooklyn. 3 pm.

23 MON BLOOD DRIVE. No registration necessary – walk-ins welcome! 2:30 p.m. to 8:30 p.m.

LONG-TERM CARE INSURANCE WORKSHOP Explore the benefits of insurance along with the options and costs. To sign up, 883-4400, ext. 136. 7 p.m.

24 TUES FILM: *Pawn Sacrifice* (2015-116 min.). American chess prodigy Bobby Fischer (Tobey Maguire) finds himself caught between two Cold War superpowers. 7:30 p.m.

26 THUR MEET DANIEL PAISNER. The author discusses his latest novel, *A Single Happened Thing*. 7:30 p.m.

27 FRI SANDWICHED IN: "Art Under Roosevelt." Join Dennis Raverty of New Jersey City University, for this illustrated lecture. 12:10 p.m.

SOUNDSPAW: HOOTENANNY. The Library transforms into a 1960s coffee house for local musicians, singers and songwriters. 7:30 p.m.

31 TUES FILM: *The Gift* (2015-109 min.). The complacent lives of young married couple Simon and Robyn are thrown into a tailspin when Gordo arrives bearing a mysterious gift and a dark secret. 7:30 p.m.

CIVIC & NOT-FOR-PROFIT EVENTS

AMERICAN LEGION POST 509 Location for flag disposal 39 Haven Ave on front porch daylight hours only. To join call Commander Arthur George: 708-5819

ANCIENT ORDER OF HIBERNIANS 2nd Wed, 8 pm. St. Peter of Alcantara, 1327 PW Blvd.

THE ART GUILD OF PW Through 5/15 Line: Through Thick and Thin Exhibit. Gallery hours Sat-Sun 1-5 pm. 5/4 Black Show and Tell. 6-8 pm Reps will demo Golden/Qor/Gamblin products. FREE, RSVP. 5/7 Understanding Your Camera 9:30-12:30 & Portrait Photography 1:30 - 4:30pm Workshops with Harold Naideau. Ages High School & up. Register online. 5/12 Sketch & Sip Life Drawing Open to all. No instruction. 6:30-9:30 pm \$15, Must RSVP 304-5797 or info@heartguild.org. Call For Artists: Members Showcase Deadline May 7. Info: www.theartguild.org. 304-5707, 200 PW Blvd., Manhasset.

COW NECK HISTORICAL SOCIETY 5/21 Dodge Homestead Spring Fling, 1-5pm The music will be great, and the tours will be informative and entertaining. Ross, the bee-keeper will answer your bee questions. So come, sit and relax on the lawn enjoy the view over the Mill Pond. **Tours of Thomas Dodge Homestead, 5/22, 6/26, 7/24, 8/21, 9/25, 2pm sharp!!!** Suggested donation: \$5 Visit one of the oldest extant house in the PW area (c. 1721). Seven generations of the Dodge family lived in the house which has changed little since its construction. 58 Harbor Road.

FREE & ACCEPTED MASONS PAUMANOK-PORT WASHINGTON LODGE NO. 855, 2nd and 4th Tuesday of every month from Sept. - June. Polish Hall, 5 Pulaski Place, Dinner (all interested in Freemasonry) at 7 pm. Meeting (open only to members) 8 pm. Info: Adam Bernstein at adam_bernstein@optimum.net.

GREATER PORT WASHINGTON BID 1st Wed., 7:30 pm Chamber/BID Office, 329 Main St (Sunset Park).

KNIGHTS OF COLUMBUS Meet 2nd & 4th Tues, 8 pm, 155 Manorhaven Blvd 767-0040, www.kofc1227.com, email: info@kofc1227.com

KIWANIS CLUB OF MANHASSET-PW 2nd & 4th Thurs: Lunch at PW Yacht Club

LEAGUE OF WOMEN VOTERS OF PORT WASHINGTON-MANHASSET 5/2 PW School Board Candidates Forum - 8 pm, Schreiber Cafeteria. If more than 3 run, come hear why those vying for 3 opening seats, want to serve on the Port Washington School Board. Information: Judy Jacobson at judyhp@gmail.com or 627-0831.

PARENT RESOURCE CENTER Classes and afterschool programs for children ages 0 and up. 767-3808 or email info@parentresource.org. 232 Main Street, lower level.

POLISH AMERICAN MUSEUM 16 Bellevue Ave. Museum open Sun. by appointment. 883-6542.

PW BID First Wed of the month 7pm at the PW Chamber offices, 329 Main Street.

PW CHAMBER OF COMMERCE Meets second Tues, 8 am, Fish Kebab 286 Main St. 883-6566. 5/6 HarborFest Talent Show Tryouts, 3 - 7:30 pm, for children who can sing, dance, play an instrument or are talented! Mertz Community Building, 382 Main St.

PW CONSERVANCY Second Saturdays at Stannards Brook 10 - 11 am Community clean up series continues. Info: pwparksconservancy.org, pwparksconservancy@gmail.com

PW GREEN Non-profit environmental group meets on second Thurs, 7:30 pm at PW Library. Info: pwwgreen.yolasite.com.

PW LIONS CLUB Meets first Tues, 6:15 pm, in the staff lounge of Helen Keller National Center, 141 Middle Neck Rd. Info 242-3191

PORT WASHINGTON/MANHASSET CHAPTER OF CANCELCARE 5/1 Mother's Day Brunch, 11:30 am - 3 pm LaMotta's Restaurant \$35 adults & \$20 per child under 12. Unlimited Brunch Buffet, soft drinks, coffee, juices, muffins, dessert, raffles & prizes. All welcome! For tickets & info: Wendy 312-6451 or Barbara 883-6693.

PW SENIOR CITIZENS CENTER 80 Manorhaven Blvd. 883-6656 Activities are free w/weekly membership of \$20. Open 8 am - 3:30 pm Mon-Fri. Info: www.tonh-projectindependence.net or call 311

PW SENIOR COMMUNITY SERVICE CENTER St. Stephen's Church 9 Carlton Ave. 944-9654. Mon-Fri 9-4pm. Transportation available. Lunch at noon daily. Call

for reservations & weekly schedule.

PW YOUTH ACTIVITIES (PYA), Sports programs for boys and girls in grades K - 7 year-round. PW's largest not-for-profit youth sports organization. www.pyasports.org or 944-7921.

SANDS POINT PRESERVE CONSERVANCY 5/7 Bugs with Wings, 11 am - 12:30 pm Discover life cycles of butterflies, dragonflies, honeybees and more at indoor and outdoor stations, a short presentation, stories, art projects, and visits to the habitats. Start anytime. M: \$5 per car. 5/8 Mother's Day Tea in the Rose Garden 3 - 5 pm The perfect setting to enjoy Mother's Day with a traditional afternoon tea and scones and live chamber music. See website for fees. 5/14 Family Yoga 11 - 11:45 am Stretch, bend, reach, and balance - all the while celebrating the wonders of nature. M: \$5 per car/NM: \$15 per car. 5/14 Sands Point

Preserve Clean Up 12:15 - 2:15 pm Besides being unsightly, litter contributes to the injury and death of wildlife. 5/21 Hunt for Fossils! 11 am - 12:30 pm Discover fossils at the Preserve as well as giant boulders that were brought here by ancient glaciers as well as 100-year-old castles and a Dino Trail. 5/22 Exploration Hike 11 am - 1 pm Join biologist, Eric Powers, for an adults-only exploration around the Preserve in search of signs of spring and wildlife. M: free/NM: \$10 per car. 5/22 Chamber Players International in Hempstead House 3 - 5 pm A premiere ensemble featuring internationally renowned concert musicians. Refreshments following. M: \$40/NM: \$45. Please reserve for all programs. 127 Middle Neck Road, Sands Point. Info: sandspointpreserveconservancy.org, info@sandspointpreserve.org, 571-7901.

SONS OF ITALY IN AMERICA - JOHN M. MARINO LODGE Meet 3rd Wed, PW Senior Center, 80 Manorhaven Blvd. Light refreshments and Italian music 7 pm, meeting 8 pm. marinolodge.org. 718-423-8674 or princem779@verizon.net.

TEENCARE AT LANDMARK COMMUNITY CENTER Fourth Thurs. Ages 11 - 14, w/families affected by cancer meet for an evening of games, pizza and fun. Info & reg (required): 631-370-7532 or Karen.DeMairo@lls.org. The PIT at Landmark Community Center, 232 Main St.

TWIN PINES FOOD PANTRY/ THRIFT SHOP Closed for renovations. Look for the Grand Reopening. If you would like to volunteer, or for info, call 883-9777

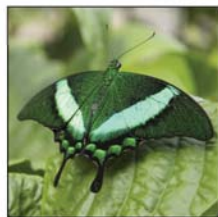
VETS OF FOREIGN WARS OF THE US Henderson-Marino Post #1819. 2nd Mon every month, 8 pm. 29 Mohegan Ave., Manhasset Isle. 767-1552

MAY
2016

SANDS POINT PRESERVE



Mother's Day Tea in the Rose Garden May 8, 3-5 pm



Bugs with Wings

May 7
Start between
11 am & 12:30 pm



Hunt for Fossils

May 21
Start between
11 am & 12:30 pm



Spring Family Yoga

May 14
11 am



NEW! Adult Nature Programs Exploration Hike

May 22
11 am



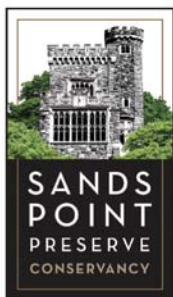
International Coastal Clean Up

May 14
12:15 pm



Spotlight: Chamber Players International

Sunday, May 22
3 pm & post-concert
reception



12-Month Membership

Join us for year-round programs and seasonal celebrations for families and adults. Enjoy free parking and discounted admission to select events.

For information: SandsPointPreserve.org • 516.571.7901

info@sandspointpreserve.org • 127 Middle Neck Road, Sands Point, NY 11050



Harbor Links

Grill Open 7 Days

- 18 Hole Championship Course
- Nine Hole Executive Course
- Driving Range

Ask About Hosting
Your Next Private Function
At Harbor Links

Great For Corporate
or Social Gatherings

Great Dates Still
Available For 2016

Barbecues
&
Other Custom Parties

Perfect Setting for
Showers, Birthdays,
Rehearsal Dinners

Join Our E-Club
For Exclusive
Specials and Events
www.harborlinks.com

Executive Course
Nine & Dine

FOR BANQUET INFO
Please call or email Jeanine Phelan
516-767-4810
jphelan@palmergolf.com

Mother's Day Brunch

SEATINGS: 12:00 PM AND 2:30 PM

Cold Selections

Mediterranean Station

Domestic & Imported Cheese,
Sliced Italian Meats w/ Olives,
Artichokes, Mushrooms, Roasted
Peppers & Assorted Breads/Rolls

All American Breakfast

Vegetable Frittata, French Toast w/
Berry Compote & Whipped Cream,
Bacon, Sausage & Home Fried Potatoes

Salads

Field Greens, Tomatoes, Cucumbers,
Carrots & Olives w/ Assorted Dressings

~
Traditional Caesar Salad w/ Herb
Crouton & Parmesan Dressing

~
Roasted Beet Salad w/ String Beans,
Goat Cheese & Balsamic Dressing

~
Heirloom Cherry Tomato & Spring Mozzarella Salad

Bread Display

Croissants, Bagels,
Muffins & Breakfast
Breads

Fulton Fish Market

Smoked Salmon w/
Tomato, Red
Onion, Capers &
Chopped Eggs

Hot Entrées

Pomegranate & White Balsamic Glazed Chicken
w/ Natural Pan Jus & Wild Mushroom Ragout

~
Garlic Rubbed Loin of Pork w/ Natural Pork Jus

~
Herb Crusted Cod w/ Broccoli Rabe
& Lemon Butter Sauce

~
Seared Cauliflower w/ Brown Rice &
Spinach in Caper Raisin Vinaigrette

~
Radiatore w/ Arugula Roasted Peppers,
Portobello Mushrooms in a Light Cream Sauce

~
Herb Roasted Fingerling Potatoes, Whipped Yukon
Gold Potatoes, Spring Vegetable Medley

Children's Buffet

Chicken Fingers

~
French Fries

~
Macaroni &
Cheese

Carving Station

Striploin of Beef w/
Bordelaise Sauce

~
Cedar Plank Glazed
Salmon w/ Tomato
Caper Relish

Chef's Omelet and Waffle Station

Dessert

Cakes, Chocolate Mousses, Cupcakes, Peach Bread Pudding & Warm Apple Crisp

~
Chocolate Fountain w/ Fruit, Marshmallows and Pretzel Sticks

\$39.95 ADULTS / \$16.95 CHILDREN
+ 20% ADMINISTRATION FEE & TAX

HARBOR LINKS GOLF COURSE
1 WEST FAIRWAY DRIVE
PORT WASHINGTON, N.Y. 11050

FOR RESERVATIONS PLEASE CALL DOMINICK
516-767-4822 OR DCAPIZOLA@PALMERGOLF.COM

One Fairway Drive • Port Washington, NY • www.harborlinks.com • 516-767-4816