



S M T W T F S

**FREE  
Take One**

# PORT WASHINGTON NOVEMBER 2013 CALENDAR OF EVENTS

**Where to Go and What to Do!**

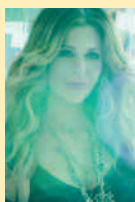
**www.PWcalendar.com**

## LANDMARK ON MAIN STREET



**Nov 2, Rosanne Cash 8 pm** Rosanne Cash has recorded eleven No. 1 singles and received one Grammy Award and twelve Grammy nominations. Her last album, *The List*, won the Americana Music award for Best Album of the year and was a critical and commercial success.

**Nov 9, Spotlight Gala '13 Starring Rita Wilson, 7 pm** Known as an actress and a film producer, Rita Wilson's early ambitions were musical. She has achieved her dream with the release of her debut album *AM/FM* - a collection of classics from the '60s and '70s. Reception follows the concert in the tented Spotlight Club. Landmark honors: Peter Forman, Office of Emergency Management; Kirby Veevers, Healthcare Program Consultant; Eric Rubenstein, Ruskin Moscou Faltischek; and Tai Wang, WAC Lighting.



**Nov 16, David Bromberg Band with special guests Melody Walker & Jacob Groopman, 8 pm** Bromberg's concerts showcase his musicianship in many musical genres including folk, blues, bluegrass, ragtime, country and ethnic. He'll perform old favorites and new music from a CD due out this fall.

**Nov 21, Alive Inside: Special Screening, followed by a Conversation with Dan Cohen, founder of Music and Memory, 7:30 pm** A moving documentary showing the power of music to awaken deeply locked memories for those suffering with Alzheimer's and dementia. As we follow one man's journey, we are inspired and educated about the amazing therapeutic benefits of music. Free admission.



**Nov 23, Andrea Marcovicci: Moonlight Cocktail, 8 pm** After 45 years in show business, The "Queen of Cabaret" (KGO Radio) celebrates her 65th birthday with a brand new concert that pays tribute to that bygone era of sophisticated nightlife of dining and dancing and the singers like

Mabel Mercer, Bobby Short and Billie Holiday.

**Nov 24, A Christmas Carol, 2 pm** Theatreworks USA's *A Christmas Carol* captures both the humorous and touching moments of the classic story with witty dialogue and fresh new songs, conveying Dickens' original message that the holiday season should be a "kind, forgiving, charitable time."



**Landmark On Main Street • 232 Main Street  
www.landmarkonmainstreet.org • 516-767-6444**

## Peter Pan & Wendy at Schreiber High School, November 21-24

Schreiber High School is thrilled to present, *Peter Pan and Wendy*, adapted by Doug Rand, based on the story by J.M. Barrie, on Nov. 21, 22 and 23 at 7:30 pm and Nov. 24 at 2 pm.

This beloved tale of a young boy who never wants to grow up and the many adventures he embarks upon with Wendy, John, Michael and the Lost Boys, is sure to please audiences of all ages! As Captain Hook, Smee and Starkey battle with the Indians for control of Neverland, this classic and heartfelt comedy unfolds with pure magic.

Under the direction of Ms. Christine Nelson and produced by Ms. Lauren Foster-Holzer, this production has a crew of 15 students who help bring the fantas-



*Wym Stopford as Peter Pan and Nate Krantz as Capt Hook.*

tical words on the page to life.

*Peter Pan and Wendy* features the talents of: Ellie Bain, Daliah Bernstein, Diana Brennan, Sabrina Brennan, Sophie Brett-Chin, Alexandra DeAngelis, Sarah DeMarino, Bridget Doherty, Nina Grauer, Julia Hayden, Nate Krantz, Yvette May, Jacob Miltenberg, Max Miranda, Elizabeth Muratore, Sameer Nanda, Amelia Pacht, Tessa Peierls, Megan Poulos, Sydney Ronis,

Eric Rosenblatt, Wym Stopford, Stephanie-Anne Thomsen, Ariel Waldman, Arielle Waller, Karina Wasserman, Kelsey Weisburd & Kimberly Winter.

Tickets are \$15 General Admission, \$10 for under 18, complimentary for senior citizens. For more information, call the Creative Arts Department at 767-5480.

## Port Washington Community Coat Drive

Many people in the Port Washington community are unable to afford winter clothing and blankets for themselves and their families. You can help! Donations of winter jackets, hats, scarves, boots, gloves of all sizes as well as blankets are needed to distribute to the needy. All donations must be clean and in good condition.

**Donations may be brought to the elementary schools from Wed., Oct. 30 - Fri., Nov. 1. There will be collection boxes in the Weber Middle and Schreiber High School lobbies. Donations will also be taken at the Manorhaven Pool lobby from Nov. 4 - 8, from 9 am - noon.**

**Clothing will be distributed from Manorhaven Pool: Thurs., Nov. 7: 4 - 8 pm; Fri., Nov. 8: 1 - 4 pm Sat., Nov. 9: 9 am - 1 pm.**

For information call Lauren Edwards 353-2847 or Stephanie Silverstein 603-6542.

## Kiwanis Pancake Breakfast



The Kiwanis Club of Manhasset-Port Washington is proud to announce their 46th Annual Pancake Breakfast on Sunday, Nov. 3, 8 am - noon at the Manhasset High School cafeteria (200 Memorial Place, Manhasset).

For a donation of \$8 per person (children under 8, free) attendees receive pancakes, bacon, sausages and coffee, tea or juice.

All proceeds benefit the Kiwanis Foundation.

## 2013 Port Washington Thanksgiving Day 5-Mile Run

Join 3,000 of your neighbors at the PW Thanksgiving Day 5-mile run, a great event for runners and walkers (ages 9+) benefiting the Community Chest of PW, a nonprofit organization dedicated to improving the lives of Port Washington residents.

Register on-line at [www.active.com](http://www.active.com) or download an application at [www.portchest.org](http://www.portchest.org). Tax deductible fee, \$35 Adults, advance; \$50 Adults, day-of-race; \$25 Age 9-18. Participants get a commemorative Thanksgiving Day Run long-sleeved t-shirt. The design was chosen from among many submissions in a Schreiber HS logo competition.

Awards will be given to the top three finishers, male



and female, and to the winners in 16 different age categories and a physically challenged division. Timing and results will be calculated by Finish Line Road Race Technicians and posted at [www.FLRRT.com](http://www.FLRRT.com).

Participate in the Our Lady of Fatima food pantry collection by bringing unexpired cereal, cooking oil, peanut butter, jelly, pasta sauce, tuna fish, local area grocery store gift cards or prepaid VISA cards to any race packet pick up.

Yoga stretch at 8 am in the skating rink at Manorhaven Park, by Yoga Life. Free post-race massage sponsored by Massage Envy Spa.

For info or to volunteer contact the Community Chest at 767-2121 or [info@portchest.org](mailto:info@portchest.org).

**DON'T FORGET TO VOTE!  
Election Day, November 5  
Local Elections including Nassau  
County Officials, Legislative Districts,  
& Town of North Hempstead Officials**



**Marjorie Lieberman**  
Licensed Salesperson  
350 Main Street  
Port Washington, NY 11050  
C. 516-241-8220  
O. 516-883-2900 Ext. 183

marjorielieberman@danielgale.com

danielgale.com



## RESTAURANT EVENTS & ENTERTAINMENT

**TUESDAYS**  
**LENNON'S PUB** 105 Main St. 883-4350  
Pub Quiz Nite- 8:30pm  
**THURSDAYS**  
**CRABE** 14 Haven Ave. 767-6767  
Karaoke  
**FINN MACCOOL'S** 205 Main St. 944-3439  
Open Mic/Karaoke 9 pm  
**SULLIVAN'S QUAY** 541 PW Blvd. 883-3122  
Karaoke Every Thursday 9:30 pm 'til late  
**FRIDAYS**  
**CRABE** 14 Haven Ave. 767-6767  
Live Entertainment 10 pm  
**DOLPHIN BOOKSHOP CAFE**  
299 Main Street, 767-2650  
All types of music. Free. 7 pm

**FINN MACCOOL'S** 205 Main St. 944-3439  
Dan Bornico on Guitar 9 pm  
**SATURDAYS**  
**CRABE** 14 Haven Ave. 767-6767  
Live Entertainment 10 pm  
**FINN MACCOOL'S** 205 Main St. 944-3439  
George on Sax  
**SULLIVAN'S QUAY**  
541 PW Blvd. 883-3122  
DJ & Karaoke Every Sat. 10 pm 'til late  
**SUNDAY**  
**FINN MACCOOL'S** 205 Main St. 944-3439  
Harpest 12 - 3 pm

**La Parma** ★★★★★  
*On the Bay*  
**ITALIAN RESTAURANT**  
Book Your Parties,  
Business Functions & Other Private Events  
FOLLOW US ON THE WEB AT  
**www.LaParma.com**  
**516-439-4960**  
415 Main Street • Port Washington

## PORT WASHINGTON SCHOOLS SCHEDULE - NOVEMBER

**4 MON - 9 SAT** Community Coat Drive  
(Story on page 1)  
**5 TUES** Election Day - No School  
**6 WED** Daily HSA 8 pm APR  
**7 THURS** No School for Pre-K - 5 Students  
Daily Blood Drive 8 am  
Safety and Task Force Meeting 12:15 pm Daly Annex  
**9 SAT** Schreiber LIFA Debate Tournament  
**11 MON** Veterans Day - No School  
**12 TUES** Board of Ed Mtg, 8 pm, Weber Aud  
**13 WED** SEPTA/AGATE Mtg 7:30 pm Weber Lib.  
**15 FRI** Battle of the Buildings Volleyball 7pm  
Schreiber Gym  
**18 MON** SEPTA CPSE Transition 9 am Daly Annex  
SEPTA CPSE Transition 7 pm Guggenheim  
**20 WED** SEPTA Post High School 6:30 pm  
Schreiber Choir Room  
Guggenheim HSA Meeting 7 pm Computer Lab  
**21 THURS - 23 SAT** Schreiber Fall Drama:  
Peter Pan & Wendy 7:30 pm (Story on page 1)  
**24 SUN** Schreiber Fall Drama:  
Peter Pan & Wendy 2 pm  
**27 WED - 29 FRI** No School -  
Hanukkah/Thanksgiving Recess

**PORT WASHINGTON SCHOOL DISTRICT**  
Administration Office 767-5000  
www.portnet.k12.ny.us  
Daly 767-5200 • Guggenheim 767-5250  
Manorhaven 767-5300 • Sousa 767-5350  
Salem 767-5400 • Weber Middle 767-5500  
Schreiber High School 767-5800

## Port Summer Show Parent Meeting

If your child is interested in theater and will be entering 7th grade through graduating High School, June of 2014, we'd love to meet you.

We are starting to plan the 2014 Port Summer Show and would like to invite everyone to our parent meeting Wed., Nov. 6, from 7:30-8:30pm at the PW Library. Your input is encouraged and appreciated, so bring your ideas and share them with us.

## Shields Sponsors "TJ Day" Dog Party

Shields Hardware & Plumbing's store-dog, TJ would like to invite everyone to support the THN Shelter Connection Volunteers who help homeless pets in Port Washington on Nov. 3, 11 am - 2 pm. There will be hot dogs & pup corn, water by the bottle or bowl, doggie bandanas, homemade dog treats, photos with your dog, meet & greet TJ, doggie bags and dog biscuits for all! Shields is located at 267 Main Street.

Put relaxation on your holiday list.

Looking for the perfect gift? Surprise everyone on your list with a Massage Envy Spa gift card.

You are invited to our Member/Guest Open House during Port Holiday Magic Dec. 4th 5-8PM

Massage Envy Spa - 47 Main St.  
516-767-6368 Open 7 Days

**Crave**  
AMERICAN CONTINENTAL STYLE RESTAURANT  
A Menu For Every Taste!

**20% OFF DINING WITH THIS AD**  
NOT TO BE COMBINED WITH ANY OTHER SPECIALS

**DAILY SPECIALS**  
Steaks • Seafood • Pasta • BBQ • Hamburgers

**HAPPY HOUR**  
11 am - 7 pm • Mon - Fri  
1/2 price Drinks & Appetizers

**BRUNCH 7 DAYS**  
Private Party Room

**THURSDAYS**  
Karaoke Night and Ladies Night

**ENTERTAINMENT**  
Friday and Saturday • Starting at 10PM

Daily Specials & Coupons on Web  
**WWW.CRAVELI.COM**  
WE DELIVER

14 HAVEN AVE • PORT WASHINGTON  
(RIGHT ACROSS FROM THE TRAIN STATION)  
516-767-6767 • OPEN 11AM • 7 DAYS

MAKE YOUR RESERVATIONS NOW!  
FOR ALL HOLIDAYS AND EVENT PLANNING

**SUNDAY TICKET**

**TITANS OF BUSINESS AND THE BEST OF DESIGN**  
A SHOWHOUSE AT HISTORIC HEMPSTEAD HOUSE

**Design Showhouse at Hempstead House**  
November 2 - 24, 2013 • 10 a.m. - 4 p.m.  
Closed Tuesdays

**FRIENDS OF THE SANDS POINT PRESERVE**  
THE GUGGENHEIM ESTATE

**www.TheSandsPointPreserve.com • 516.571.7901**  
127 Middle Neck Road, Sands Point, NY 11050



## Port Shopping Magic is Back

Over the past few years it has been popular to count the empty stores on Main Street and lament the problems with the economy, the taxes, the parking, etc., etc.

Yes, we regret the loss of some special, long time merchants and services like Joan Hutchinson's Five J's Jewelers, Montebello's, Tava and more.

Well, if you haven't noticed our retail shops are filling up!

The new locations, owners and offerings cover the gamut from 'more of the same' to a number of unique, and, hopefully, desired products and services.

We now have at least 6 yogurt shops, 6 wine and spirits stores, a new men's shop, two shops where you can make ordinary items special with personalization. Port residents are also devoted to health and beauty. Just look at the number of Pilates, exercise, training facilities along with the nail, spa and hair salons.

We took a short trip around town and without checking on actual start dates we came up with this list of new, or relatively new, ventures.

Two training studios on Manorhaven Boulevard, Training to the Third Power, and Port Training. A New Laundromat next to Sunoco... big and bright; Crossfit - another training facility on Sintsink, Drive East; Moolala Yogurt at Soundview Center

Further along Shore Road, two restaurants formerly owned by Michael Tizzano, are now: Gropello's owned by Michael's old friend and employee, "Maury"; and Tramanto managed by the Rodriguez family.

On Lower Main Street: Initial Stop; The Shoe Vault; Wit and Whim; Suite 275

Middle Main: Affilia Baby; T Mobile; Digni clothing for men

Main Street Near the Station: Lazo

Convenience Store (formerly occupied by the Juvenile Diabetes Store); Yummy Gyro; Kazan Restaurant; the new very popular Crave on Haven Avenue with its very active happy hour

Upper Main: Yamaguchi is relocating right up the street; Second Time Around consignment shop; Rosso Uptown is being opened by Michael Tizzano, in the former Amigos' location. Michael and 'Massimo' will feature brick oven pizza following the style of Naples in addition to a full variety of pizza selections. The restaurant will also have a dining area.

More on upper Main: Aria Hair Salon; Purple Consignment Shop; Commisso Salon has reopened at Maryland; Steve's Barber Shop is now where Sweetie's Candy Shop was, Li Shoalin Kung Fu Center has opened where Port Nutrition was (now at Port Commons); Frippery - lots of gifts and more.

In Port Commons - The rebuilt center is a great example of revitalization in Port. Smashburger - bustling all day long; Rio - Party Gifts and more; Vintage Grapes Wine and Liquor - open, friendly, featuring small house wine selections; 16 Handles; Adult and Pediatric Dermatology

South on Port Blvd: Alma Bank coming where Dairy Barn was; Bagel Boss is now Port Cafe

At Willowdale: Razzle Dazzle Car Wash is up and running. Joining the center known for Let There Be Bagels; Edible Arrangements; Personalize it; In Bloom for Jewelry and Flowers; Joseph's Salon

Wow! After reviewing this admittedly partial list we have to get out on Dec. 4 and help celebrate Port Holiday Magic and spend our holiday gift and entertainment dollars right here in Port!

- Dave

## St. Stephen's Fall Fair, Sat. Nov. 2

St. Stephen's Episcopal Church in Port Washington is holding its Fair and Children's Carnival Nov. 2 from 10am - 4pm, rain or shine, across from the Library on Main Street. 767-0363.



all perfect for holiday gift giving. You will also find gently used, near-new furniture, and an amazing array of books in excellent condition.

A highlight of the Fair is always the St. Stephen's

Admission is FREE, and there's fun for the whole family. Kids of all ages will enjoy the petting zoo, pony rides, and the children's carnival with games and prizes. In the Parish Hall, there are handmade crafts and sweets, giftable china, silver, small electronics, infant and children's furnishings and handmade knits,

Quilt Raffle! This year's quilt is entitled Carpenter's Star and has been handmade by the Ladies at St. Stephen's quilting group.

It wouldn't be a Fair without unforgettable food! Sample our delicious home-made treats in the Heavenly Café and Coffee Shop, and enjoy a delicious lunch.

## Save the Date : December 4th Don't Miss Port Holiday Magic!

Plan to have a stress-free and pleasant shopping, dining and entertaining experience on Wed., Dec. 4, during Port Holiday Magic.

Main Street will come alive with holiday cheer from 5 - 8 pm, when many stores and eateries from the "Boulevard to the Bay" will have discounts, specials, treats, entertainment and other offers. Watch wonderful performers all along Main Street and admire the beautiful holiday decorations while you shop and stroll.

### Something New

To add to the excitement, this year there will be a new contest - the Port Holiday Magic Giveaway! Shoppers

can pick up entry forms at any of the participating stores. Just visit the stores during Port Holiday Magic through Sun., Dec. 8, and receive a store sticker. Everyone who collects at least eight stickers will be eligible to win one of many prizes donated by the merchants. You may win the Grand Prize - a \$250 shopping and dining spree!

Port Holiday Magic is sponsored by the Greater Port Washington BID, the Port Washington Chamber of Commerce, the Residents For a More Beautiful Port Washington and the Town of North Hempstead.



**BE PREPARED!**  
**THE NEXT TIME  
THE LIGHTS GO OUT**  
Home Generators Installed By  
The Sheridan Professionals

Generating Power Solutions  
For Over 40 Years

**SHERIDAN  
ELECTRIC**  
SHERIDAN POWER SOLUTIONS

Call 516-883-4553 or email  
sheridanportwash@gmail.com

17 Valley Road, Port Washington, NY

FREE ESTIMATES • FULLY LICENSED & INSURED • 24/7 EMERGENCY SERVICE

**RESIDENTIAL • COMMERCIAL • INDUSTRIAL**  
"SE HABLE ESPAÑOL" LICENSE #0563 ALL WORK GUARANTEED

## LUTHERAN CHURCH HARVEST FAIR & FLEA MARKET

*Kickoff the Holiday Season With Us!*

SATURDAY, NOVEMBER 16TH, 2013  
9:00AM - 3:00PM

### MAIN LEVEL

Top quality vendors, sell your gold for cash, luncheon, and Pat's superb calzones and heroes on the patio.

### LOWER LEVEL

Fine gifts, children's clothing and toys at deeply discounted prices at the church's own Christmas Boutique, and Attic Treasure galore!

*New Elevator For Your Two-Level Shopping Pleasure*

### Lutheran Church of Our Savior

12 Franklin Avenue

Port Washington, New York 11050

516-767-0603

www.lutheranchurchportwashington.com

FREE Parking at the L.I.R.R. Station





**OPEN 7 DAYS**  
Mon-Sat 9:30-7:00  
Sunday 10:00-6:00

Best in Town  
Luxurious  
Relax  
Hygienic  
Organic spa

*La La Nail & Spa*

GIFT CERTIFICATES AVAILABLE

www.lalanailspa.com  
Tel. 516.883.1136  
134 Shore Road • Port Washington

**Over 50 Classes A Week!**

om sweet om  
YOGA

**\$40**  
FOR NEW STUDENTS  
1 MONTH UNLIMITED YOGA

**516-944-YOGA**  
12 Irma Ave., Port Washington, NY  
gail@omsweetomyoga.com  
www.omsweetomyoga.com

**Adult & Pediatric Dermatology, LLC**

**Dr. Carissa Summa**  
Board Certified in Dermatology

**Dr. Adam Schaffner**  
Fellowship Trained in Facial Plastic & Plastic Surgery

939 Port Washington Boulevard  
Port Washington, NY 11050  
T: 516-441-5081 F: 516-441-5085

1078 Oaks Drive  
Franklin Square, NY 11010  
T: 516-442-0133 F: 516-442-0131

www.DrSumma.com

SUNDAY MONDAY TUESDAY WEDNESDAY THURSDAY FRIDAY SATURDAY

# NOVEMBER 2013

The staff of Port Washington Calendar has made every effort to provide current, accurate information in this issue. We encourage our readers to call the sponsors to confirm schedules and events.

**Let Us Know of Your Organization's Events**  
We publish what we feel will be of interest to our readers.  
Call Marie at 883-0313 or email your information to editorial@pwcalendar.com.

**2** **New Moon**  
**Kiwanis Pancake Breakfast**  
Manhasset HS Cafeteria 8 am - noon  
(Page 1)

**Everyday Ways To Make A Difference**  
Sands Point Preserve 10 am - 2 pm  
(Page 7)

**Pianist JI**  
PW Library 3 pm (Page 6)  
Daylight Savings Time Ends

**10** **First Quarter**  
**Fall Family Yoga**  
Sands Point Preserve 11 am  
(Page 7)

**Children's Literature Panel Discussion**  
PW Library 1:30 pm  
(Page 6)

Tongue Twister Day

**17** **Full Moon**  
**Autumn Activities Day**  
Sands Point Preserve 9:30 am/11am  
(Page 7)

**Lecture & Performance: Porgy & Bess**  
PW Library 3 pm  
(Page 6)

Take A Hike Day

**24** **Last Quarter**  
**A Christmas Carol**  
Landmark on Main 2 pm  
(Page 1)

**Peter Pan & Wendy**  
Schreiber High School 2 pm  
(Page 2)

**Barrymore Festival: Ah Wilderness**  
PW Library 1:30 pm  
(Page 6)

**4**  
**PW Coat Drive Collection**  
Manorhaven Pool 9 am - noon  
(Page 1)

**Film: The Loss of Nameless Things**  
PW Library 7:30 pm  
(Page 6)

**11**  
**Virtual Visits: The Annenberg Collection at MMA**  
PW Library 2 pm  
(Page 6)

**Starlab Planetarium**  
Sands Point Preserve various times  
(Page 7)

Veterans Day


**18**  
**Afternoon At The Opera: Moses & Arun**  
PW Library 3 pm  
(Page 6)

**Author Nelson DeMille**  
PW Library 7:30 pm  
(Page 6)

**25**  
**Film & Lecture: Come Due Coccodrille**  
PW Library 7 pm  
(Page 6)


Parfait Day

**5**  
**Chess Players**  
PW Library 2 - 4 pm  
(Page 6)

 Election Day

**12**  
**Chamber of Commerce**  
Ayhan's Fish Kebab 8 am  
(Page 5)

**Free Hypertension Screening**  
PW Library 11 am - 2 pm  
(Page 6)

**19**  
  
**DECEMBER Issue Closing**  
Call 883-0313 or email dave@pwcalendar.com for details

**26**

**6**  
**Songs For Cecelia**  
St. Stephen's Episcopal 7:30 pm  
(Page 1)

Saxophone Day

**13**  
**Photography Club of LI: Regau Flowers**  
PW Library 7:30 pm  
(Page 6)

Kindness Day

**20**  
**Job Fair**  
PW Library 11 am  
(Page 6)

**Soundswap: Sal Cataldi's Spaghetti Eastern Music**  
PW Library 7:30 pm  
(Page 6)

**27**  
  
First Night of Hanukkah

**7**  
**PW Coat Drive Distribution**  
Manorhaven Pool 4 - 8 pm  
(Page 1)


Men Make Dinner Day

**14**  
**Director's Cut: Amour (Love)**  
PW Library 7:30 pm  
(Page 6)

**21**  
**Alive Inside & A Conversation with Dan Cohen**  
Landmark on Main 7:30 pm  
(Page 1)

**Peter Pan & Wendy**  
Schreiber High School 7:30 pm  
(Page 1)

**Soundswap: Rex Fowler**  
PW Library 7:30 pm  
(Page 6)

**28**  
**PW Community Chest Turkey Run**  
(Page 1)  


Thanksgiving

**1**  
**Sandwiched In: Mary Pickford**  
PW Library 12:10 pm  
(Page 6)

**Film: Not Fade Away**  
PW Library 7:30 pm  
(Page 6)

Authors Day

**8**  
**Scrabble Players**  
PW Library 2-5 pm  
(Page 6)

**PW Coat Drive Distribution**  
Manorhaven Pool 1 - 4 pm  
Last Day for drop off (Page 1)

**Film: East**  
PW Library 7:30 pm  
(Page 6)

**15**  
**Live @PWPL: Ken Kresge**  
Tribute to Sir Elton John  
PW Library 7:30 pm  
(Page 6)

Clean Your Refrigerator Day

**22**  
**Film: 42**  
PW Library 7:30 pm  
(Page 6)

**Peter Pan & Wendy**  
Schreiber High School 7:30 pm  
(Page 1)

Go For A Ride Day

**29**  
**Film: Silver Lining Playbook**  
PW Library 7:30 pm  
(Page 6)

Flossing Day

**2**  
**St. Stephen's Fall Fair**  
St. Stephen's 10 am - 4 pm  
(Page 3)

**Rosanne Cash**  
Landmark on Main 8 pm  
(Page 1)

Deviled Egg Day

**9**  
**PW Coat Drive Distribution**  
Manorhaven Pool 9 am - 1 pm  
(Page 1)

**Reception for Photographer Stephanie Atkinson**  
PW Library 2 - 4 pm  
(Page 6)

**Spotlight Gala w/Rita Wilson**  
Landmark on Main 7 pm  
(Page 1)

**16**  
**Annual Harvest Fair**  
Lutheran Church of Our Savior  
9 am - 3 pm (Page 6)

**David Bromberg Band**  
Landmark on Main 8 pm  
(Page 1)

Guinness World Record Day

**23**  
**Sally Miller Fashion Show**  
Sands Point Preserve 2:30 pm  
(Page 7)

**Andrea Marcovicci:**  
Landmark on Main 8 pm  
(Page 1)

**Peter Pan & Wendy**  
Schreiber High School 7:30 pm  
(Page 1)

Fibonacci Day

**30**  
**Puzzle Day!**  
PW Library All Day  
(Page 6)

Small Business Saturday

**LAFHEY FINE HOMES**  
LAFHEY.COM

**Count Your Blessings**

215 Main Street  
Port Washington, NY  
516.883.7780 Ext. 218  
516.639.1172 cell  
ekatz@lafhey.com  
www.EdieSellsLongIsland.com

**Edith E. Katz**  
C.B.R., S.R.E.S., C.I.H.M.S.  
Licensed Associate RE Broker  
LUXURY PORTFOLIO  
FINE PROPERTY COLLECTION

**LANDMARK**  
ON MAIN STREET

Rosanne Cash ..... Nov 2  
Rita Wilson ..... Nov 9  
David Bromberg ..... Nov 16  
Alive Inside ..... Nov 21  
Andrea Marcovicci ..... Nov 23  
A Christmas Carol ..... Nov. 24

**Box Office: (516) 767-6444**  
www.landmarkonmainstreet.org

**My Little World Daycare, Inc.**  
"Where learning is fun"

Arts & Crafts • Math & Reading  
Music & Dance • Bi-lingual  
Breakfast, Snack & Lunch Available  
Ages Six Weeks to 12 Years Old

LOCATED AT  
1165 Port Washington Blvd.  
Port Washington, NY

Contact Myriam Signorini  
516-883-1723 • 917-406-8141  
Licensed by New York State LID#2350086FDC  
www.mylittleworlddaycareinc.com

**Finn MacCool's**  
THE PLACE FOR CELEBRATIONS

SPECIAL MENU  
**Join Us For Thanksgiving**  
November 28th, 2013  
RESERVATIONS NOW BEING ACCEPTED

**MONDAY Wine Down**  
with 1/2 Price Bottles of Wine

**TUESDAY Senior Night**  
Complimentary Glass of Wine with Dinner

**WEDNESDAY Italian Pasta Night**

**THURSDAY Corned Beef & Cabbage**

**FRIDAY Lobster & Seafood Night**  
Dan Bornico on guitar at 9 pm

**SATURDAY Prime Rib**  
Live Music: George on the Sax

**SUNDAY Brunch**  
w/Complimentary Mimosa or Bloody Mary  
Harpist Noon - 3 pm

**MONDAY NIGHT FOOTBALL**  
Complimentary Finger Food

205 Main Street  
Port Washington  
516-944-3439  
PRIVATE PARTY  
ROOM AVAILABLE

**FINN MACCOOLS**

**Dr. Mary's**  
**CHIROPRACTIC & WELLNESS CENTER**  
Specializing in Enzyme Nutrition Therapy

**Finding Natural Solutions For Your Health and Wellbeing**

**Dr. Mary Gmilerak-Apat**  
17 ROCKWOOD AVE.  
(Across from Daly School)  
www.drmariychiropractic.com  
516-944-3615

**IS YOUR C.P.A. M.I.A.?**

**Sheehan & Company**

15 S. Bayles Avenue, Port Washington, NY  
516.883.5510 • www.sheehancpa.com

**VIDEOS**  
Of Your  
Wedding • Bar/Bat Mitzvah • Anniversary

**20% DISCOUNT**  
WITH THIS AD

CALL  
**Ron Harris**  
PRODUCTIONS

Tel: 516-767-9636 • Cell: 516-244-1142  
ronharris7@optonline.net  
www.ronharrisproductions.com

**Crest Cleaners**  
"If It's Special To You It's Special To Us"

**Michael Rizzo**  
**Meghan McNulty Rizzo**  
Port Washington Residents

**Pick-Up and Delivery in Port**

1059 Willis Avenue  
Albertson, New York 11507  
Call 516-742-9730 or email crestcleaners1@aol.com



## NOVEMBER AT THE PORT WASHINGTON LIBRARY

516-883-4400 • [www.pwpl.org](http://www.pwpl.org)

### EXHIBITS

**MAIN GALLERY:** CHILDREN'S ILLUSTRATOR EXHIBITION, Nov. 1 - Dec. 1.

**MARTIN VOGEL PHOTOGRAPHY GALLERY:** STEFANIE ATKINSON, Nov. 6 - Dec. 30.

### EVENTS

**1 FRI SANDWICHED IN:** Mary Pickford, First Movie Star. 12:10 p.m. SCRABBLE PLAYERS: Join us for a game. 2 to 5 p.m.

**NOT FADE AWAY** (2012-112 min.). For adults. 7:30 p.m.

**3 SUN** JI: The pianist performs selections from Bach-Busoni, Brahms and others. 3 p.m.

**4 MON** GREAT BOOKS DISCUSSION GROUP: Francis Bacon's *The New Organon*. 1 p.m.

THE AFFORDABLE CARE ACT: What Are My Healthcare Options? Registration in progress, in-person or by calling 883-4400 Ext. 136. 7 p.m.

*THE LOSS OF NAMELESS THINGS* (2006-103 min.). 7:30 p.m.

**5 TUES** CHESS: All are welcome. Bring a game if you have one. Every Tuesday 2 - 4 p.m.

TIME TRAVEL with author Frank Borzellieri. 7:30 p.m.

**8 FRI** SANDWICHED IN: Meet Gwen Cooper, author of *Homer's Odyssey* and *Love Saves the Day*. 12:10 p.m.

GREAT AMERICAN HOLIDAYS: Thanksgiving: America Remembers Puritans and Natives with Dr. Ronald J. Brown. 3 p.m.

*THE EAST* (2013-116 min.). 7:30 p.m.

**9 SAT** NEXT CHAPTER: Join us for a discussion of current events. 10 am - noon.

JOB FAIR RESUME WORKSHOP: Free of charge but registration is required. Sign up at the Reference Desk, or call 883-4400, Ext. 111. 2:30 p.m.

STEFANIE ATKINSON: A reception for the photographer whose work is in the Martin Vogel Photography Gallery. 2 to 4 p.m.

**10 SUN** CHILDREN'S LITERATURE PANEL DISCUSSION: Past, Present, Future: Insiders Look at Children's Literature in the 21st Century. 1:30 - 3 pm. Reception & Signing to follow. 3 - 5 pm.

**11 MON** VIRTUAL VISITS: The Annenberg Collection at the Metropolitan Museum of Art with Ines Powell. 11 a.m.

MARTIN VOGEL DISTINGUISHED PHOTOGRAPHER LECTURE: Stefanie Atkinson in conjunction with her exhibition. 7:30 p.m.

**12 TUES** HYPERTENSION SCREENING: Free screening conducted by St. Francis Hospital. 11 am - 2 pm.

MEET ROGER ROSENBLATT, author of *The Boy Detective: A New York Childhood*. Sponsored by the Friends of the Library. 7:30 pm

**13 WEDNESDAY** BOOK DISCUSSION: *An Atlas of Impossible Longing* by Anuradha Roy. 7:30 p.m.

PCL: The Photography Club of Long Island hosts photographer, videographer and PCL member Regau Flowers. 7:30 p.m.

**14 THURS** MEDICARE PART D: Information session, by appointment only. Call 311 or 869-6311 to register. Sponsored by Project Independence. 9 am - noon

DIRECTOR'S CUT: Film expert John Bosco will screen and discuss *Amour (Love)* (2012-127 min.). French w/English subtitles. 7:30pm

**15 FRI** SANDWICHED IN: Nine First Ladies from New York. 12:10 pm

SCRABBLE PLAYERS: Join us for a game. 2 - 5 pm

LIVE@PWPL: Please Don't Shoot the Piano Player. Ken Kresge pays tribute to Sir Elton John. 7:30 p.m.

**17 SUN** FOL UNIVERSITY: Professor Orin Grossman, lectures on Gershwin's *Porgy and Bess*, and will perform with a piano arrangement by Earl Wild. 1:30 pm.

**18 MON** GREAT BOOKS DISCUSSION GROUP: John Locke's *A Letter Concerning Toleration*. 1 pm.

AFTERNOON AT THE OPERA: Professor James Kolb explores Arnold Schoenberg's *Moses and Aron*. 3 pm

RETIREMENT PLANNING: Registration is in progress in-person or by calling 516-883-4400, Ext. 136. 7 pm

MEET NELSON DeMILLE, author of *The Quest*, originally published in 1975. 7:30 pm.

**19 TUES** IS OUR FOOD "REAL?" World Events Through Our Changing Agriculture. Gary Feldman, consumer food educator on GMO food. 7:30 pm

**20 WED** JOB FAIR: Connecting local job seekers with local businesses. Representatives will be on site to meet with prospective employees. Co-sponsored by the library and Assemblywoman Michelle Schimel. Information 883-4400, Ext. 117. 11 am

LIBRARY BOARD OF TRUSTEES meets. The public is invited at 7:30 pm

SOUNDSWAP: Sal Cataldi's Spaghetti Eastern Music. 7:30 p.m.

PORT WRITES: Facilitated by Michael Chaplan. 8 p.m.

**21 THURS** BOOK DISCUSSION: *Packing for Mars: The Curious Science of Life in the Void* by Mary Roach. 1:30 p.m.

3rd THURSDAYS @3:30: Turkeys and All the Trimmings with Professor Thomas Germano. 3:30 p.m.

SOUNDSWAP: Rex Fowler. 7:30 p.m.

**22 FRI** SANDWICHED IN: New York's Lower East Side: Gateway to America. 12:10 p.m.

HONORING THE MEMORY OF JFK: With Dr. Ronald J. Brown. 3 pm. 42 (2013-128 min.). 7:30 p.m.

**23 SAT** JOB SEARCH STRATEGIES WORKSHOP: Karen McKenna. Free but registration required. Call 883-4400, Ext. 111. 1 pm

**24 SUN** BARRYMORE FESTIVAL: *Ah, Wilderness!* (1935). 1:30 p.m.

**25 MON** LOVE, LUST & CRIME: Italian cinema with Prof. Valerie Franco. *Come Due Coccodrilli (Like Two Crocodiles)* (1994-100 min.). Italian w/English subtitles. 7 pm.

**26 TUES** SHUN LI AND THE POET (*Io Sonno Coppe Li*) (2011-97 min.). 7:30 p.m.

**27 WED** THE LIBRARY WILL CLOSE at 5 p.m.

**29 FRI** SILVER LININGS PLAYBOOK (2012) For adults. 7:30 pm

**30 SAT** PUZZLE DAY! If puzzles are your thing, come and spend a few minutes! All day.

## RELIGIOUS SERVICES & ACTIVITIES

**ARCHANGEL MICHAEL GREEK ORTHODOX CHURCH** 1100

Fairway Dr., 944-3180, [archangelmichaelchurch.org](http://archangelmichaelchurch.org)  
**Sun** 9:30 am (Ortho 8:30 am), Sunday School 9:30 am (Sept-June), Fellowship: 11:30 am

**CHABAD OF PORT WASHINGTON** 80 Shore Rd, 767-TORAH  
[www.chabadpw.org](http://www.chabadpw.org) **Daily (M-F)** 7am, **Sun** 9am. **Fri** 6:30pm  
**Saturday** Torah Study 8:45am, Service 9:30am  
(Children's Service 10:30am)

**CHEVRAT TEFILLAH** 1 Sintink Dr. W, 767-1844 **Shabbat**  
Service 8:30 am. Kiddush after

**THE COMMUNITY SYNAGOGUE** 160 Middle Neck Rd, 883-3144  
Ext. 322 [www.commsyn.org](http://www.commsyn.org) **Shabbat service** Friday nights - 8 p.m. **Second Friday** Family Service - 6:30 pm **Shabbat morning** Torah Study - 9 am

**Shabbat morning service** - 10:30 am

**FIRST CHURCH OF CHRIST SCIENTIST** 402 Main St, 767-0484  
**Sun** 11am, **Wed** 7pm. Reading Room open Tues-Thurs, noon-3pm

**LUTHERAN CHURCH OF OUR SAVIOR** 12 Franklin Ave,  
767-0603, [lutheranchurchportwashington.com](http://lutheranchurchportwashington.com) Services:

**Sun** Worship 10am; **Tues** Kids Klub 4-5:30pm **Quality vendors**  
**needed for Annual Harvest Fair (Nov 16, 9 am - 3 pm.)**

Reserve now at \$90 per table. Contact Karen Spitz at  
[Liclink@aol.com](mailto:Liclink@aol.com) or 767-0617

**MT. OLIVE A.M.E. CHURCH** 20 Mackey Ave, 883-3530  
**Sun** Church School all ages 9:30 am; Morning Prayer 10 am;  
Worship Services 11 am

**OUR LADY OF FATIMA** 6 Cottonwood Rd,  
[ourladyoffatimapw.org](http://ourladyoffatimapw.org) 767-0781 **Mon-Fri** Mass 8 am **Sat**  
Mass 5 pm & 7 pm (Spanish) **Sun** Mass 8 am, 10 am (Family),  
11:30 am **Holy Days** - Mass 8am & 7:30 pm.

**PORT JEWISH CENTER** 20 Manorhaven Blvd. 944-7202 [port-jewishcenter.org](http://port-jewishcenter.org) **Fri** Shabbat Service (3x month) 8 pm, **Third Fri**  
7:30 pm. **First Fri** Tot Shabbat 6:30pm

**Dec 1 Annual Latke Dinner 4 pm.**

**SAINT PETER OF ALCANTARA** 1327 PW Blvd, 883-6675  
[stpeterofalcantara.org](http://stpeterofalcantara.org) **Mon-Sat** Mass 8:30am **Sat** Church 5pm  
**Sun** Church 7:30am, 10:30 am & noon, Family Mass 9 am,  
School Church 9:30am

**ST. STEPHEN'S CHURCH** Main St, 767-0363 [www.ststephen-spw.org](http://www.ststephen-spw.org) **Sun** - Holy Eucharist 8am Family Worship 10am,  
Sunday School 10am, Nursery Care 10am

**TEMPLE BETH ISRAEL** Temple Dr, 767-1708, [tbiport.org](http://tbiport.org)  
**Fri** 6:45pm, **Sat** 9:30am, **Sun** 9am  
**Nov 23 "Latkes & Vodkas" Adult Hanukkah Cocktail Party,**  
**7:30 pm.** Call for more info.

**THE BIBLE CHURCH** 35 Campus Dr, 944-8150,  
[www.thebiblechurch.us](http://www.thebiblechurch.us) **Sun:** Sun. School (all ages) 9:45am;  
Sunday Morning Worship 11am; Bible Study 6:30 pm

**UNITED METHODIST CHURCH OF PW** 35 Middle Neck Rd,  
883-1430 [www.umc.org](http://www.umc.org) **Sun** Worship & Church School 10 am  
Fellowship Hour (nursery care provided)

## Lutheran Church of Our Saviour Harvest Fair, Flea Market & Luncheon

This year's Harvest Fair at the Lutheran Church of Our Savior on Franklin Avenue is bigger & better. The Fair is 9 am - 3 pm on Sat., Nov. 16. Friends and supporters enjoy this annual event - for many, the Fair is a kick-off to the holiday season.

Held in the recently renovated two-level hall, equipped with an elevator for street level access to both levels, a superb offering of Christmas items, fine gifts, new children's clothing and toys are available at deeply discounted prices. Top quality vendors featuring jewelry, leather goods, and a



gold buyer will be available as well as gently used clothing, and a Christmas boutique.

Enjoy Pat D's famous homemade calzones and sausage & pepper

heros, Gisela Ewel's famous pea soup and Ronnie Mosby's award winning (Fairway Market) chicken soup. Interested vendors should call Karen Spitz at 917-270-3834.

Free parking is available at the LIRR station and does not require a resident's sticker. For more info call 767-0603, or [lutheranchurchportwashington.com](http://lutheranchurchportwashington.com)

WELCOME to Your New Fine Wine Shop

**Vintage Grapes**  
Premium Wines & Spirits

Join Us For a Grand  
**FINE WINE TASTING - NOVEMBER 2, 2 - 6 PM**  
**Special Holiday Selection • Extraordinary Varieties & Vintages**  
**Special Pricing**  
A professional Wine Shopper will be on hand for assistance in choosing  
your Thanksgiving and Holiday selections.

featuring  
**WINE TASTINGS** Every Friday & Saturday  
**FREE** Delivery  
Plenty of **FREE** Parking with easy access  
**BIG** Selection of Fine Wines  
**Senior Discount** on Wine **Every Tuesday**

**SPECIAL WINE POLICY**  
**20% Off cases of 12\* • 10% Off 6 or more bottles\***  
\*Excludes sales & specials

Mon-Wed 10 am - 8pm • Thurs - Sat 10 am - 9 pm • Sun 12 - 6 pm  
**999 Port Washington Blvd. • 516-918-9999**  
[info@thevintagegrapes.com](mailto:info@thevintagegrapes.com)



## Gala to Support PW Senior Citizens Center

On Nov. 14, at 6 pm, all are invited to the Swan Club in Roslyn, for a Gala to support the Port Washington Senior Citizens Center. Tickets are \$70 per person (\$50 for members). For tickets and more information please call the center at 883-6656.



## Port Washington's Christmas Tree Lighting Sun., Dec. 8

Blumenfeld Park, Main St.  
(Across from the Library)

Watch a live re-enactment of the Nativity, including our young angels followed by the singing of carols and the lighting of the tree.

After the pageant, the children anxiously await the arrival of Santa on the big fire truck! Each child can visit with Santa, and receive a gift. Hot cider, hot chocolate & cookies will be served.



Christmas Tree Lighting Committee, 2013

## CIVIC & NOT-FOR-PROFIT

**AMERICAN LEGION POST 509 NOTICE: FLAG RETIREMENT - LOCATION FOR FLAG DISPOSAL** 39 Haven Avenue. Container on the front porch. During daylight hours only please. To join Post 509 call Commander Arthur George: 708-5819

**ANCIENT ORDER OF HIBERNIANS 2nd Wed: 8 pm.** St. Peter of Alcantara, 1327 PW Blvd.

**FRIENDS OF THE SANDS POINT PRESERVE Nov 1, The Masquerade Ball, 7 pm** To launch Designer Showcase. Cocktails, dinner and dessert will be served. **Nov 2 - 24 Titans of Business & the Best of Design** (Story on this page.) **Nov 3, Everyday Ways to Make a Difference** Between 10 am - 2 pm, discover many ideas for minimizing trash, reusing items at home - and sharpening your recycling skills. Pre-reg recommended. **Nov 10, Fall Family Yoga** 45-minute class, for all ages. Pre-reg recommended. **Nov 11, Starlab Planetarium** Take a celestial adventure via the indoor, inflatable Starlab. Hear stories about the stars and take a simulated space ride. 30-minute show, 'astronomical' craft and snack. Pre-reg required. Shows 4:30, 5:15, 6:15, 7 pm. Age 4+. **Nov 17, Autumn Activities Day** Take a guided fall hike at 9:30 - 10:30 am or 11 am - 12 pm. Your guide will help you spot hidden natural gems in our fall woods. Walks are limited to 25 participants, age 5+. Reservations required. **Nov 23, Sally Miller Girls' Couture Fashion Show, 2:30 pm.** (Story on this page.) For more info: 571-7901 www.thesandspointpreserve.com, 127 Middle Neck Rd.

**GREATER PORT WASHINGTON BID Nov 5, Board of Directors Meeting** 7 pm Chamber/BID Office, 329 Main Street (Sunset Park).

**KNIGHTS OF COLUMBUS Meet 2nd & 4th Tuesdays, 8 pm,** 155 Manorhaven Blvd 767-0040, www.kofc1227.com, email at info@kofc1227.com.

**KIWANIS CLUB OF MANHASSET - PORT WASHINGTON 2nd & 4th Thurs:** Lunch at Port Washington Yacht Club, 1 Yacht Club Dr. 12:30pm **NORTH SHORE KAYAK CLUB Last Thurs of the month through Nov. Informative monthly meetings.** All skill levels invited. Hagedorn Room, PW Library. Info: Alan Bergman 917-400-7041

**POLISH AMERICAN HALL** 5 Pulaski Pl. 883-5553 **Nov 2 County Line Country Western,** Doors Open 7:30 pm, Dancing 8 pm 'til midnight. \$15 Donation includes coffee & dessert, Cash bar. **Nov 3 Jimmy Sturr 2 - 6 pm,** Polish Dance Call for info. www.port-washingtonpolishclub.com

**POLISH AMERICAN MUSEUM** 16 Bellevue Ave. Museum open Sun. by appointment. 883-6542.

**PW CHAMBER OF COMMERCE Meets second Tues, 8 am,** Fish Kebab 286 Main St. 883-6566

**PW SENIOR CITIZENS CENTER** 80 Manorhaven Blvd. 883-6656 **Mon-Fri, 9am-3pm.** Lunch: noon \$3. Free transportation. **Mon** Chair Yoga 11-Noon; Knitting/Crochet Circle 10-11am; Alternating Line Dancing or Karate 1-2pm **Tues** Painting 9:30-11:30; Sewing & Quilting 9:30-1:30; Wii bowling 10-11am; BINGO 12:30-1:30pm **Wed** Bridge 9 - Noon; Escalate Your Art (art class) 9:30-Noon; Tai Chi 1-2pm **Thurs** Gentle Yoga 10:30- 11:30am; BINGO 12:30-1:30pm **Fri:** Movie 9:30 - 11:30am; Core Strength Exercise 11-Noon. Exercise opps are free. Other activities, free w/yearly membership of \$20

**PW SENIOR COMMUNITY SERVICE CENTER** St. Stephen's Church 9 Carlton Ave. 944-9654. **Mon-Fri 9-4pm.** Transportation available. Lunch at noon daily. Call for reservations. **Mon, Wed-Fri 10:30am** Exercise instructors **Mon:** Stained glass, painting & decoupage 10am, Exercise w/Suzanne 10:30am; **Tues:** Digital Photography 10am; **Wed:** Yoga w/Pattie 10:30am **Thurs:** Tai Chi w/Rosalie 10:30am, Art w/Ed 10am Bring a sketch pad & pencils **Fri:** Light workout w/Pattie. **PW YOUTH ACTIVITIES (PYA),** Sports programs for boys and girls in grades K - 7 year-round - including baseball, softball, basketball, lacrosse, football, wrestling, field hockey, and more. PW's largest not-for-profit youth sports organization with beautiful playing fields at the end of Glen Ln off Sandy Hollow Rd. www.pyasports.org or 944-7921.

**SCIENCE MUSEUM OF LI Nov 1 Halloween Family Fun Party, 6-8 pm** Come in costume. Spooky animals, storytelling, refreshments for children ages 5-10, \$15/child \$5/adult Parent must accompany child. Register. **Nov 14 2013 Big Bang Ball, 6 - 9:30 pm,** honoring Kenneth White, Brookhaven National Laboratory; Dr. Gayle Insler, Adelphi University; Dr. Rita Melikian, Garden City High School; Frank Pellicione, Flushing Bank, at the Garden City Country Club. 627-9400 x 10. 1526 N. Plandome Rd, www.sml.org

**TWIN PINES FOOD CO-OP/ THRIFT SHOP** 382 Main St, **Tues-Sat 10am-5pm.** Health food & groceries. Thrift Shop w/ clothing, bric-a-brac, toys, furniture & more. Parking at Town Dock. 883-9777

**VETERANS OF FOREIGN WARS OF THE US** Henderson-Marino Post #1819. **2nd Mon every month, 8pm.** 29 Mohegan Ave., Manhasset Isle. 767-1552

## Design Showhouse at Historic Hempstead House

Friends of the Sands Point Preserve presents a world-class design showhouse - "Titans of Business and the Best of Design" at historic Hempstead House on the Guggenheim Estate on Nov. 2 - 24, open Wed - Mon, 10 am - 4 pm.



els taking to the runway in couture clothing created by this extraordinary designer.

The new Palm Court Café at Hempstead House will serve food and beverages, elegantly prepared by Philip Stone Caterer from 10 am - 3 pm.

Leading interior designers will transform this magnificent Tudor-style mansion, inspired by "Titans" in the worlds of business, technology, entertainment, fashion, gardening, publishing, and the arts. The Design Showhouse, will raise essential funds for restoration projects at Hempstead House.

All of the designers recognize the Guggenheim Estate's historical significance, and they have shown tremendous dedication to this project.

In addition to the Showhouse Tours, Sat., Nov. 23, is Sally Miller Day in Castle Gould's Great Hall. The Fashion Show begins at 2:30 pm with local young mod-

Showhouse Tour tickets are \$30 per person for 12-years old and up. Private group tours are available upon request. Tickets on Nov. 23 include the Showhouse Tour and the Fashion Show, and children 8-years old and up are free with paying adults. Parking at the Sands Point Preserve is an additional \$10 per car; parking is free with a Friends Annual Parking Pass.

For information and tickets see www.thesandspointpreserve.com, call 571-7901 or visit the Gate House at 127 Middle Neck Road, Sands Point, daily from 8 am - 6 pm.

## "Sing For Cecilia" Continues Nov. 6 & Dec. 4

Port Washington Play Troupe hosts an church fundraiser series in the St. Cecilia Room at St. Stephen's Episcopal Church, 7:30 - 9:30 pm. The public is invited to come on stage and sing a song from the Great American Songbook, accompanied on piano (bring sheet music or choose

from provided songbooks). The evening will conclude with a group sing-along of a well-known classic.

Donations will be collected to re-carpet the St. Cecilia Room of the church. Info: 500-2012 or www.portwashington-playtroupe.com.

## HIGHEST PRICES PAID IN NEW YORK

Port Washington  
**Rare Coins & Collectibles**  
Rare Coins • Gold • Collectibles  
30 Years Experience

### Buyer of All

- Silver & Gold Coins
- Old US Coins
- Gold Jewelry
- Diamonds & Watches
- Military War Relics
- Sports Memorabilia
- Sterling Silverware



Sell your coins and jewelry to us! We will pay the HIGHEST MARKET VALUE for all your valuables, appraised in the comfort of your home. Ask for Howard Frydman

We carry a full line of  
**STEINER SPORTS**  
authentic autographed  
memorabilia!!

648 Port Washington Blvd. • Port Washington  
1 Block from North Shore Animal League  
**516-369-4104**  
hecoin1@aol.com

NGC AUTHORIZED MEMBER DEALER  
CAC AUTHORIZED DEALER  
PGS AUTHORIZED DEALER

Let us know about your organization's event!

Call 516-883-0313 or Email marie@pwcalendar.com



**Wednesday, December 4, 5pm ~ 8pm**

**Shop & Stroll from the Boulevard to the Bay**

**SHOPPERTAINMENT!**

- \* Special Store Events \* Holiday Treats \*
- \* Trolley \* Entertainment \* Santa \*
- \* Menorah Lighting \* Holiday Decorations \*
- \* Free Parking (after 5:00pm) \*



**Enter the  
Port Holiday Magic Giveaway!**



How? Pick up an entry form at a participating store, then visit 8 (or more) stores for a chance to win a \$250 shopping/dining spree & many other prizes.

**For information call 883-6566 or 767-9151**

**PortHolidayMagic.com Like us on **



**Sponsored by**  
Greater Port Washington Business Improvement District  
Port Washington Chamber of Commerce  
Residents for a More Beautiful Port Washington  
Town of North Hempstead

