

PORT WASHINGTON **JANUARY 2012** **CALENDAR OF EVENTS**

Where to Go and What to Do! www.PWcalendar.com

JANUARY AT LANDMARK

Jan 12, Strike the Balance: Health & Healing, 7:30 pm, Free. Conversations From Main Street – panel discussion by experts in conventional and complementary health-care. Discussion will cover various approaches to prevention, treatment and management of health conditions and creates a new definition of health as being not merely the absence of illness, but rather the vitality of the whole person. *For more information on the panel please visit the website.*



Jan. 14, Aimee Mann, 8 pm Former front woman of Til Tuesday, Aimee Mann's solo career has put her in the forefront of contemporary songwriters. Her clever lyrics and onstage wit makes each of her concerts unique and memorable.

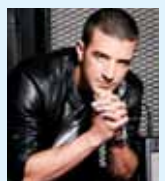
Jan. 15, Ramona Quimby, 2 pm Beverly Cleary's Ramona character doesn't have it easy – her older sister is a pain, her aunt may marry a dork, and her Dad just lost his job. She even thinks that her teacher hates her. But with the help of her loving and patient family and friends, Ramona faces these challenges – as audiences laugh and cheer her on.



Jan. 21, Stew and the Negro Problem, 8 pm Deemed "L.A.'s best band" by the *L.A. Weekly* with three critically acclaimed albums from 1997-2002. The *New York Times* cited the last as "perhaps the finest collection of songs an American songwriter has come up with."

Jan. 22, Joan Osborne, 8 pm In a duo acoustic performance. After her breakthrough hit "One of Us," Joan has rocked on to become one of today's top female singers.

Jan. 27, Mark Ballas, 8 pm Two-time *Dancing with the Stars* champion and chart-breaking Sony recording artist Mark Ballas performs songs from his debut album *HurtLoveBox*. Reality will Rock!



232 Main Street
www.landmarkonmainstreet.org • 516-767-6444

Winter Choral Concert at Hempstead House

The Winter Choral Concert on January 8 at 2:30 pm will feature four extraordinary Port Washington-based choral groups joining forces for this great annual concert: The Community Synagogue, United Methodist Church, St. Stephen's Episcopal Church, and Makelah - The Jewish Community Choir. These powerful choirs will harmonize with piano accompaniment in the excellent acoustics in Hempstead House for a truly moving musical experience. Admission is \$10 per car and light refreshments will be served.



For more information about programs and events, please see www.thesandspointpre-serve.com or call 516-571-7901.

PORT WASHINGTON LIBRARY CELEBRATES ITS 120TH ANNIVERSARY

Founded in 1892, the Port Washington Public Library has served the community in a multitude of ways for 120 years. In celebration of this exciting milestone, the library has planned a full year of over 20 signature programs and events. Plan to visit often and join the celebration.



Council's presentation of Imani Winds on April 15 with concerts at noon and 3 p.m. The Grammy-nominated

Cool Sounds

The celebration starts off with a performance by the Jesters of Jive, performing the music of the 1940s on January 15 at 3 p.m. – it's the first in a series of performances of music over the decades. Next in the series are the Revels-Bey Band (1920s-30s), February 17; and Something Special Big Band (1950s), April 22.

April will be a busy month of Anniversary activities, including the Music Advisory

wind quintet has established itself in the spheres of classical chamber music and new works that blend European, American, African and Latin American traditions. This program is co-sponsored by Marvin and Elise Tepper.

Great Authors

The Friends of the Library has invited two acclaimed authors, Lucette Lagnado and André Aciman, who will discuss their Egyptian childhoods at the annual Ruth D. Bogen Memorial Lecture, April 18.

The Friends' 43rd Annual Book & Author Luncheon will take place on May 11, celebrat-

(Continued on page 3)

LIAF Invites Community to Taste Of The Town

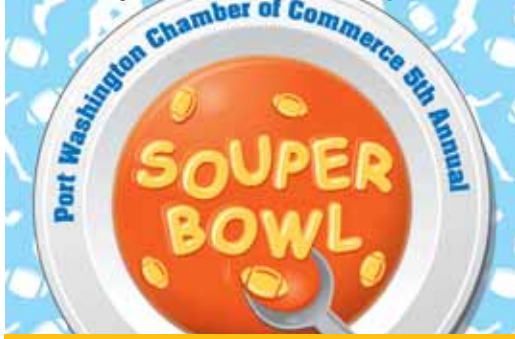
The Long Island Alzheimer's Foundation (LIAF) invites you to sample delicacies from some of the Town of North Hempstead's best-known culinary establishments, and little known treasures (including Mediterranean, Italian, Latin, Japanese, and Continental cuisines), FREE OF CHARGE on Thursday, January 19, from 4 – 8 pm at 5 Channel Drive, Port Washington.

Attendees will also have the opportunity to learn about Long Island Alzheimer's Foundation programs and services for families affected by Alzheimer's disease and related forms of dementia, as well as its Brain Fitness program for healthy individuals wishing to optimize cognitive functioning.

The event is free, but reservations are requested. Please call 516-767-6856 to reserve a space.

Save the date:

February 4 - 5th Annual Souper Bowl



Methodist Church • Middle Neck Road
 Call the Chamber of Commerce 883-6566 for more info

Happy New Year!

Dr. Mary's CHIROPRACTIC
Specializing in Enzyme Nutrition Therapy



Dr. Mary Gmiterek-Apat
ANNOUNCING OUR NEW LOCATION
17 ROCKWOOD AVE.
(Across from Daly School)
www.drmarychiropractic.com
516-944-3615

Barbatsuly Sideris



WINTER CLEARANCE SALE
ALL FURS IN STOCK
25% OFF

Barbatsuly Sideris Furs - Sales & Storage
102 Main Street, Port Washington NY
Evenings by Appointment 516-944-3733

Ayhan's MEDITERRANEAN MARKETPLACE Cafe

2 WHOLE ROTISSERIE ROASTED CHICKENS
Includes Large Greek Salad and One Qt. Rice or Pasta or Grain

REG. \$35
NOW! \$20 w/ad
(TAKE OUT ONLY)

293 Main Street • Port Washington, New York
516-767-1400
www.AyhansRestaurants.com
CATERING FOR ALL OCCASIONS
Expires 1/31/12

AUTOMOTIVE Bill's REPAIR

DOMESTIC AND FOREIGN AUTOMOBILE REPAIR
One Main Street • Port Washington, NY
(516) 944-7208 • 883-5969
Bill Scaglione Paul Oleksiw

RESTAURANT EVENTS

MONDAYS
LOUIE'S 395 Main St
883-4242
Frank Sinatra Tribute Band 6 - 10 pm

TUESDAYS
LENNON'S PUB 105 Main St.
883-4350
Pub Quiz Nite- 8:30pm

WEDNESDAYS
SULLIVAN'S QUAY 541 PW Blvd.
883-3122
Wine Down Wednesday Every Wed

THURSDAYS
FINN MACCOOL'S 205 Main Street
944-4339
Karaoke Every Thursday

LA PARMA 415 Main St.
439-4960
Live Music - Mark Sganga

SULLIVAN'S QUAY 541 PW Blvd.
883-3122
Karaoke Every Thursday

FRIDAYS
BRIO RISTORANTE & MICHAEL'S WINE BAR
45 Old Shore Rd. 767-0077
Guitar Playing 7 - 10 pm

LA PARMA 415 Main St.
439-4960
Friends of Distinction Jazz Trio
7:30 - 10:30 pm

SATURDAY
SULLIVAN'S QUAY 541 PW Blvd.
883-3122
Jan 14 - Kristian Rex 10pm-Late
Jan 21 - Only One Joe 10pm-Late

JANUARY SCHOOL CALENDAR

2 MONDAY Winter Recess (Last Day)
4 WEDNESDAY AGATE Mtg 7:30 pm Weber Library
6 FRIDAY - 7 SATURDAY Schreiber Drama Club Young Playwriters Festival 7:30 pm
8 SUNDAY Schreiber Drama Club Young Playwriters Festival 2:30 pm
10 TUESDAY Board of Education Meeting 8 pm Schreiber Aud
11 WEDNESDAY Manorhaven PTA PEP Mtg 9:30 am
Schreiber Naviance Junior Conference Kick-Off 7 pm Aud
12 THURSDAY Daly Winter Concert 9:30 am Gym
Salem Winter Concert 7:30 pm Gym
13 FRIDAY Guggenheim HSA Mtg 10:45 am Caf
16 MONDAY Martin Luther King Day (Schools Closed)
17 TUESDAY AAPW Mtg 7:30 pm Schreiber Faculty Caf
18 WEDNESDAY Weber HSA Mtg 8:45 am Weber Library

Weber 6th Grade Winter Art Reception 7 pm Front Lobby
20 FRIDAY Sousa Multicultural Feast 7 pm Sousa Caf
23 MONDAY - 27 FRIDAY Weber Book Fair
24 TUESDAY Daly HSA General Mtg 10:30 am APR
Weber 8th Grade Accelerated Art Reception 7 pm Front Lobby
Board of Education Mtg 8 pm Schreiber Aud
25 WEDNESDAY Weber Blood Drive 2-8 pm Weber APR
Schreiber Girls Basketball PYA Clinic 6pm Gym
Salen HSA Mtg 7 pm Library
Schreiber HSA Mtg 7:30 pm Caf
27 FRIDAY Sousa HSA Mtg and Parent Breakfast 9:30 am Sousa Caf
Schreiber Girls Basketball PYA Night 7 pm Gym

PORT WASHINGTON SCHOOL DISTRICT
767-5000 • www.portnet.k12.nyu.s

JANUARY VARSITY SPORTS - HOME GAMES

1/3 6:45 pm	Girls Basketball	MacArthur	1/13 4:45 pm	Wrestling	Hicksville
1/4 4:15 pm	B & G Bowling*	Great Neck S.	1/16 9:00 am	Wrestling	Invitational
1/4 4:45 pm	Wrestling	Baldwin	1/17 6:30 pm	Boys Basketball	Valley Stream C.
1/6 4:30 pm	Boys Basketball	Plainview JFK	1/17 7:30 pm	Boys Swimming	Levittown
1/6 6:30 pm	Girls Basketball	Plainview JFK	1/20 6:45 pm	Girls Basketball	East Meadow
1/9 4:15 pm	B & G Bowling*	Great Neck N.	1/27 7:00 pm	Girls Basketball	Hicksville
1/9 5:00 pm	Girls Gymnastics**	Great Neck N.	1/31 6:45 pm	Boys Basketball	MacArthur
1/10 6:30 pm	Girls Basketball	Calhoun	*Bowling matches are held at Herrill Lanes		
1/13 5:00 pm	Girls Gymnastics**	Valley Stream	**Gymnastics are held at Sousa		

LANDMARK on Main Street
JANUARY EVENTS

Strike the Balance!.....Jan 12
Aimee Mann.....Jan 14
Ramona Quimby.....Jan 15
From Passing Strange
Stew & the Negro Problem.....Jan 21
Joan Osborne.....Jan 22
From Dancing with the Stars
Mark Ballas.....Jan 27
Box Office: (516) 767-6444
www.landmarkonmainstreet.org

DISCIPLINE • RESPECT • SELF-CONTROL • RESPONSIBILITY • CONFIDENCE

World Taekwondo Academy
19 Main Street • Port Washington, New York

REGISTER FOR SUMMER CAMP

CLASSES FOR KIDS 3 YEARS TO ADULT

\$99
FOUR WEEKS
NEW YEARS SPECIAL
Registration, Uniform, Belt, Patches Included

516-944-5454 • worldtkd@optonline.net • www.portwtkd.com

"A TASTE OF THE TOWN"
A FREE TASTING & AWARENESS EVENT
JANUARY 19, 2012 • 4-8 PM
(SNOW DATE: JANUARY 24, 2012)

Where: Long Island Alzheimer's Foundation
5 Channel Drive, Port Washington, NY

- Enjoy samples of food from some of the BEST RESTAURANTS in the Town of North Hempstead!
- Cuisines Include: Japanese, Mediterranean, Italian, Latin and Continental
- **EVENT AND FOOD ARE FREE OF CHARGE!**
- Raise awareness about programs & services for Long Islanders affected by Alzheimer's disease and related forms of dementia.

LIAFA
Long Island Alzheimer's Foundation

For Reservations:
CALL 516-767-6856
Long Island Alzheimer's Foundation

DeLUX
TRANSPORTATION SERVICES
Experience The Delux Difference

ALL AIRPORTS • NYC • LOCAL • ANYWHERE
Servicing our community for over 40 years.


516.883.1900
www.deluxtransportation.com

ZIMBARDI FINANCIAL GROUP
Salvatore R. Zimbardi, CFP
Daryl J. Zimbardi, RR

A Full Service Financial Planning Firm
Estate & Tax Planning • Retirement Planning
T. 516-767-2600 • F. 516-883-4725
223 Main St. • Port Washington, NY
Securities offered through ING Financial Partners - Member FINRA & SIPC

AcuPort Acupuncture



DISCOUNTED PACKAGES
Support Your
Weight Loss & Quit Smoking Goals
With Acupuncture

AcuPORT

AcuportPW.com • 516.767.1001

**Over 50 Classes
A Week!**





\$40
FOR NEW STUDENTS
1 MONTH UNLIMITED YOGA

516-944-YOGA
12 Irma Ave., Port Washington, NY
gail@omsweetomyoga.com
www.omsweetomyoga.com

Marjorie Lieberman
Licensed Salesperson
350 Main Street
Port Washington, NY 11050
C: 516-241-8220
O: 516-883-2900 Ext. 183
marjorielieberman@danielgale.com



danielgale.com

SUNDAY	MONDAY	TUESDAY	WEDNESDAY	THURSDAY	FRIDAY	SATURDAY
1 First Quarter Happy New Year! 2012 New Year's Day	2 Film: <i>In A Better World</i> PW Library 7:30 pm (Page 6)	3 Film: <i>Gilda</i> PW Library 7:30 pm (Page 6)	4	5 Hootenany PW Library 7:30 pm (Page 6)	6 Film: <i>Beginners</i> PW Library 7:30 pm (Page 6)	7 Cabaret Supper Club Hempstead House 7 pm (Page 5)
8 Winter Choral Concert Hempstead House, Sands Point Preserve 2:30 pm (Page 1)	9 Full Moon	10 Chamber of Commerce Ayhan's Fish Kebab 8 am Free Hypertension Screening PW Library 11 am - 2 pm (Page 6)	11	12 Film & Discussion: <i>Another Year</i> PW Library 7:30 pm (Page 5) Strike The Balance: Health & Healing Landmark on Main 7:30 pm (Page 1)	13 Film: <i>Hanna</i> PW Library 7:30 pm (Page 5)	14 Aimee Mann Landmark on Main Street 8 pm (Page 1)
15 Ramona Quimby Landmark on Main Street 2 pm (Page 1) Jesters of Jive PW Library 3 pm (Page 6)	16 Last Quarter Afternoon At The Opera: <i>La Rondine</i> PW Library 3 pm (Page 6)  Martin Luther King Jr.'s Birthday	17	18	19 Taste Of The Town LI Alzheimer's Foundation 4 pm (Page 1)	20 Live @PWPL: Joe Iadanza Band PW Library 7:30 pm (Page 7)	21 Stew & The Negro Problem Landmark on Main Street 8 pm (Page 1)
22 Joan Osborne Landmark on Main Street 8 pm (Page 1)	23 New Moon Photographer Michael Margulis PW Library 7:30 pm (Page 6)  Chinese New Year	24 PW Calendar February Issue Closing Call 883-0313 for details	25 Film: <i>Overexposed</i> PW Library 12:10 pm (Page 6)	26 An Evening With Oscar Brand & Ervin Drake PW Library 7:30 pm (Page 7)	27 Film: <i>Super 8</i> PW Library 7:30 pm (Page 7) Mark Ballas Landmark on Main Street 8 pm (Page 1)	28 The staff of Port Washington Calendar has made every effort to provide current, accurate information in this issue. We encourage our readers to call the sponsors to confirm schedules and events.
29 Ground Hog Day Celebration Sands Point Preserve 11 am (Page 5)	30	31 First Quarter Film: <i>Odds Against Tomorrow</i> PW Library 7:30 pm (Page 9)	JANUARY 2012			

LAFFEY FINE HOMES
LAFLEY.COM

Happy Healthy 2012!



215 Main Street
Port Washington, NY
516.883.7780 Ext. 218
516.639.1172 cell
516.224.7297 fax
ekatz@laffey.com

Edith E. Katz
CRR, SRES, CLHMS
Licensed Associate RE Broker
LUXURY PORTFOLIO

\$5 OFF
any accessory purchase

Fusion Wireless 65 Main St.
Port Washington

516-944-9800
www.fusionwireless.com

My Little World Daycare, Inc.
"Where learning is fun"

Arts & Crafts • Math & Reading
Music & Dance • Bi-lingual
Breakfast, Snack & Lunch Available
Ages Six Weeks to 12 Years Old
LOCATED AT
1165 Port Washington Blvd.
Port Washington, NY

Contact Myriam Signorini
516-883-1723 • 917-406-8141
Licensed by New York State LID#235008GFC
www.mylittleworlddaycareinc.com

SIDNEY M. SEGALL
ATTORNEY AT LAW

150 MAIN STREET
PORT WASHINGTON, NY 11050

516-767-2200
516-606-9955

PERSONAL INJURY
ACCIDENTS
MEDICAL MALPRACTICE
NO RECOVERY - NO FEE
FREE CONSULTATION

Stay "N" Clay
Pottery & Art Studio

We Host Birthdays, Bridal & Baby Showers,
Scout Gatherings, Corporate Events & More!

Call Us For Details
Walks-Ins Are Always Welcome!

2 Shore Road • Port Washington • 516 883 7500
MON-FRI 2-7, SAT 11am - 6pm & SUN 11am - 5pm
(CALL FOR EXTENDED RSVP HOURS)

La Parma ★★★★★
On the Bay
ITALIAN RESTAURANT

FOLLOW US ON THE WEB AT
www.LaParma.com
516-439-4960

MAIN STREET
~ Wine & Spirits ~
EVERYDAY
Wine Discount Policy
20% off any case - same bottle
Mix or Match
12 or more bottles - 15% off
6 or more bottles - 10% off
Excludes sale & allocated wines
Credit cards accepted... No limits
We make it easy for you to SAVE!

188 Main Street, Port Washington, NY
516.883.6488 • www.mainlywines.com

SOMETHING SPECIAL EVERY DAY

MONDAY Wine Down with 1/2 Price Bottles of Wine
TUESDAY Seniors Half Price Entrees
Open Mic after 9:00pm
WEDNESDAY Italian Pasta Night
THURSDAY Karaoke Night - Starting at 9:00PM
FRIDAY Irish Night - Corned Beef & Cabbage
SATURDAY Prime Rib Special
SUNDAY Brunch with Complimentary
Mimosa or Bloody Mary

FINN MACCOOL'S
205 Main Street
Port Washington, NY
516-944-3439

PARTY ROOM AVAILABLE

IS YOUR C.P.A. M.I.A.?

Sheehan & Company

15 S. Bayles Avenue, Port Washington, NY
516.883.5510 • www.sheehancpa.com

DUTCH CONNECTION INC.
Maximize Your Business Productivity



**Bookkeeping Services
Business Consulting Services**

Please contact
Erica at 516-944-2260
Dutchconnection4@aol.com

OWN A BUSINESS?
IS THE PAPERWORK GETTING YOU DOWN?
HAVE A GREAT IDEA & WANT TO START A BUSINESS?
NOT SURE HOW TO GO ABOUT IT?
WE CAN HELP!!

Piper's
MacMind
http://macmindonline.com



**Support & Service
for
Apple Products**

516-439-5330

http://macmindonline.com

Certified Trainer Consultants Network

**Ron Harris
PRODUCTIONS**
Video Production

- Weddings • Anniversaries
- Bar/Bat Mitzvahs • Web Videos

**20% OFF
A SPECIAL EVENT
WITH THIS AD**

Tel: 516-767-9636
Cell: 516-244-1142
ronharris7@optonline.net
www.ronharrisproductions.com

**Mainly
MARKETING
& Design**
We Do Websites!

- Web Design & Maintenance
- Advertising
- Marketing
- Graphics
- Production
- Consulting
- Brochures
- Catalogs
- Presentations
- Sales Tools
- Logos, ID
- Newsletters
- Promotional Specialties
- Media Relations
- Publishing
- Mailing Services

516-883-0313

24 Main Street, Suite 201
Port Washington, NY
www.mainlymarketing.com
dallen@mainlymarketing.com

CIVIC & NOT-FOR-PROFIT

AMERICAN LEGION POST 509
NOTICE: FLAG RETIREMENT –
NEW LOCATION FOR FLAG DISPOSAL 39
Haven Avenue – Container on the front porch.
During daylight hours only please.

COW NECK PENINSULA HISTORICAL SOCIETY
SANDS-WILLETS HOUSE Saturdays Indoor
Yard Sale Almost every Saturday 12-3pm.
365-9074, 336 PW Blvd. www.cowneck.org

KIWANIS CLUB OF MANHASSET - PORT
WASHINGTON 2nd & 4th Thurs: Lunch at Port
Washington Yacht Club, 1 Yacht Club Dr. 12:30pm.

FRIENDS OF THE SANDS POINT PRESERVE
Jan 7 Hempstead House Cabaret Supper Club 7
pm Performances by Broadway's Judy Blazer, John
Cudia, Catherine Walker and Steven Lutvak. Light
Supper & cocktails, showtime 7:45 pm, Dessert &
coffee after. Cabaret style seating. Adults only.
Tickets \$100 pp (\$190 for two. 50% tax deductible)
RSVP by Jan 2. Info: info@friendsspp.com.

Jan 8 Winter Concert at Hempstead House, 2:30
pm Performances by: The Community Synagogue,
United Methodist Church, St. Stephen's Episcopal
Church, and Makelah – The Jewish Community
Choir. (See page 1)

Jan 29 Ground Hog Day 11 am – 1 pm The
Preserve's own ground hog will make his annual
appearance

Every Friday Yoga with Victoria Selbach, 9 am
Classes are inside Hempstead House, in warm
weather classes will be on the Great Lawn. Pay-
what-you-wish after entry fee to the preserve. 127
Middle Neck Road, Sands Point. www.thesands-
pointpreserve.com 516-571-7901.

LEAGUE OF WOMEN VOTERS OF PORT
WASHINGTON-MANHASSET Wed Jan 25, The
State Of North Hempstead Town Address 1:15
pm by TONH Supervisor John Kaiman. Admission
for State of the Town: No Charge. The Clubhouse at
Harbor Links, PW.

THE LONG ISLAND ALZHEIMER'S FOUNDATION
Jan. 19, A Taste of the Town, 4 - 8 pm Sample
delicacies by some of Town of N. Hempstead's culi-
nary establishments. FREE OF CHARGE. Attendees
can learn about LIAF's programs & services.
Reservations are requested: 516-767-6856, 5
Channel Drive, PW. (See page 1 & ad page 3.)

POLISH AMERICAN HALL Ballroom Dancing
Fridays Dancing 8pm-12am. \$14, cash bar.
5 Pulaski Pl. 883-5553

POLISH AMERICAN MUSEUM 16 Bellevue Ave.
Museum is open Sun by appointment. Information
883-6542.

PW CHAMBER OF COMMERCE
Meets second Tuesday, 8am at Fish Kebab
286 Main St. 883-6566

PW SENIOR CITIZENS CENTER 80 Manorhaven
Blvd. 883-6656, Mon-Fri, 9am-3pm. Lunch: noon-
\$3. Free transportation. **Mon** Chair Yoga 11-Noon,
Knitting/Crochet Circle 10-11am, Alternating Line
Dancing or Karate 1-2pm **Tues** Painting 9:30-11:30,
Sewing & Quilting 9:30-1:30, Will bowling 10-11am,
BINGO 12:30-1:30pm **Wed** Bridge 9 - Noon,
Escalate Your Art (art class) 9:30-Noon, Tai Chi 1-
2pm **Thurs** Gentle Yoga 10:30- 11:30am, BINGO
12:30-1:30pm **Fri**: Movie 9:30 - 11:30am, Core
Strength Exercise 11-Noon. Additional lectures/exer-
cise opportunities become available, call center for
details. All exercise opps are free. All other activities
are free w/yearly membership of \$20.

PW SENIOR COMMUNITY SERVICE CENTER
St. Stephen's Church 9 Carlton Ave. 944-9654
Mon-Fri 9-4pm. Transportation available. Lunch at
noon daily. Call for reservations. **Mon, Wed-Fri**
10:30am Exercise instructors **Mon**: Stained glass,
painting & decoupage 10am, Exercise w/Suzanne
10:30am; **Tues**: Digital Photography 10am; **Wed**:
Yoga w/Pattie 10:30am **Thurs**: Tai Chi w/Rosalie
10:30am, Art w/Ed 10am Bring a sketch pad &
pencils **Fri**: Light workout w/Pattie.

PORT WASHINGTON YOUTH ACTIVITIES (PYA)
Largest youth sports program in Port Washington
w/over 18 different sports programs and camps
year-round for all kids. Visit pyasports.org for info.

THOMAS DODGE HOUSE Tours on 4th Sat. of
month 1-5 pm. Oldest house in PW (1721). \$4
admission fee. 58 Harbor Road, 365-9074.

TWIN PINES FOOD CO-OP/ THRIFT SHOP
382 Main St., **Tues-Sat 10am-5pm**. Health food &
groceries. Thrift Shop w/ clothing, bric-a-brac, toys,
furniture and more. Free parking at Town Dock.

Twin Pines Food Co-Op & Thrift Shop is starting
a Craft Co-operative. An opportunity for talented
people to supplement their income by marketing
their craft. Call Edna Turner at 883-9777

VETERANS OF FOREIGN WARS OF THE US
Henderson-Marino Post #1819. **Meets 2nd Mon.**
of every month, 8pm. 29 Mohegan Ave.,
Manhasset Isle. 767-1552

Let Us Know of Your Organization's Events

We publish what we feel will be of interest to our readers.
Email your information to editorial@pwcalendar.com or call Marie at 883-0313

RELIGIOUS SERVICES/ACTIVITIES

CHABAD OF PORT WASHINGTON 80 Shore Rd,
767-TORAH www.chabadpw.org
Daily (M-F) 7am, **Sun** 9am. **Fri** 6:30pm
Saturday Torah Study 8:45am, Service 9:30am
(Children's Service 10:30am)

CHEVRAT TEFILLAH 1 Sintsink Dr. West, 767-1844
Shabbat Service 8:30 am. Kiddush after

COMMUNITY SYNAGOGUE 160 Middle Neck Rd,
883-3144 Ext. 322 www.commsyn.org
Jan 6 & Jan 20 - 8 p.m. Erev Shabbat Services
Jan 13 - 6:30 p.m. Erev Shabbat Family Services -
"Second Shabbat"
Jan 27 - 8 p.m. Erev Shabbat "Shabbat Rocks"
Musical Worship Service
Saturday 9 am Torah Study; 10:30 am
Shabbat Services

FIRST CHURCH OF CHRIST SCIENTIST
402 Main St, 767-0484 **Sun** 11am, **Wed** 7pm.
Reading Room open Tues-Thurs, noon-3pm

LUTHERAN CHURCH OF OUR SAVIOR
12 Franklin Ave., 767-0603 Services: **Sunday**
Worship 10am; **Tuesday** Kids Klub 4-5:30pm

MT. OLIVE A.M.E. CHURCH 20 Mackey Ave,
883-3530 **Sun** Church School (all ages) 9:30 am.
Worship Services 11 am and 3:30 pm

OUR LADY OF FATIMA 6 Cottonwood Rd,
767-0781 **Mon-Fri** Mass 8 am **Sat** Mass 5 pm &
7 pm (Spanish) **Sun** Mass 8 am, 10 am (Family),
11:30 am **Holy Days** - Mass 8 am & 7:30 pm.

PORT JEWISH CENTER 20 Manorhaven Blvd.
944-7202 portjewishcenter.org **Fri** (3x month) - 8
pm, (1x a month) - Family Service 7:30 pm

SAINT PETER OF ALCANTARA 1327 PW Blvd,
883-6675 **Mon-Sat** Mass 8:30am **Sat** Church
5pm **Sun** Church 7:30am, 10:30am & noon, Family
Mass 9 am, Spanish Mass: 9:30am

ST. STEPHEN'S CHURCH Main Street, 767-0363
www.ststephenspw.org **Sun** - Holy Eucharist 8am
Family Worship 10am, Sunday School 10am,
Nursery Care 10am

TEMPLE BETH ISRAEL Temple Dr, 767-1708
tbiport.org **Fri** 6:45pm, **Sat** 9:30am, **Sun** 9am

THE BIBLE CHURCH 35 Campus Dr, 944-8150
Sun: Sunday School (all ages) 9:45am
Bible Preaching 11am Bible Study 7pm

UNITED METHODIST CHURCH OF PW
35 Middle Neck Rd, 883-1430 www.umc.org
Sun Worship & Church School 10 am Fellowship
Hour (nursery care provided)

USEFUL PHONE NUMBERS

Police & Fire Emergency 911
Poison Control Center 1-800-222-1222

OTHER GOVERNMENT & LOCAL SERVICES
Nassau County PCT 6 (non-emergency) 573-6600
PW Chamber of Commerce 883-6566
PW Post Office 883-0754
PW Public Library 883-4400
PW Community Chest 767-2121
Town of North Hempstead Information: 311
Town of N. Hempstead Recycling Hotline 767-4600
Nassau County Board of Elections
Voter Information and Registration 571-2411
Greater Port Washington BID 516-286-6177

UTILITIES

Electric (emergency) 1-800-490-0075
Gas (emergency) 1-800-490-0045

PORT WASHINGTON SCHOOL DISTRICT

Administration Office 767-5000
Daly Elementary 767-5200
Guggenheim Elementary 767-5250
Manorhaven Elementary 767-5300
Sousa Elementary 767-5350
South Salem Elementary 767-5400
Weber Middle School 767-5500
Schreiber High School 767-5800

PRIVATE SCHOOLS

Chabad Academy of Science
& the Humanities 767-8672
Port Washington Christian School 944-8150
St. Peter of Alcantara School 944-3667
Vincent Smith School 365-4900

RECREATION & MUSEUMS

Cow Neck Peninsula Historical Society 365-9074
Harbor Links Golf Course 767-4817
Landmark on Main Street 767-1384
Long Island Children's Museum 224-5800
Long Island Traditions 767-8803
Polish American Museum 883-6542
Port Washington PAL 883-1266
Port Washington Youth Council 767-8336
Port Washington Youth Activities 944-3077
Pride of Cow Bay Nautical Mus 883-6566
Sands Point Preserve 571-7900
Science Museum of Long Island 627-9400

PARKS

Baxter Pond Park 572-0290
Town Dock 767-4622
NH Dept of Parks & Recreation 327-3140
NH Beach Park 869-6311
NH Manorhaven Beach Park & Pool 869-6311
Nassau Co. Parks & Recreation 572-0200

*Note: All telephone and fax numbers
are Area Code 516, unless otherwise noted.*

JANUARY AT THE PORT WASHINGTON PUBLIC LIBRARY

EXHIBITS

CONSTANCE DIAMOND: Precious, January 2 - 26.
Reception Saturday, January 7 from 2 - 4 p.m.
MICHAEL MARGULIS: Les Impressions de la Vie, Jan. 4 - Feb. 28. PowerPoint talk Jan. 23, 7:30p.m.
JEWISH LIFE IN THE HOME and Jewish Life in the Synagogue, in Celebration of The Community Synagogue's 60th Anniversary Year.

EVENTS

2 MONDAY GREAT BOOKS DISCUSSION GROUP: John Cheever's *The Country Husband*. 1 p.m.
FILM: *In A Better World (Hævn)* (2010-116 min.). In Danish with English subtitles. 7:30 p.m.
3 TUESDAY JAnoirARY FILM FESTIVAL: Seven crime classics from 1940s - '50s, beginning with Charles Vidor's *Gilda* (1946-110 min.). 7:30 p.m.
4 WEDNESDAY JAnoirARY FILM FESTIVAL: *The Killer That Stalked New York* (1950-76 min) 7:30pm
5 THURSDAY HOOTENANNY: Unique musical team-ups & song performances. Soloists or duo acts interested in performing, contact Tony Traguardo at 883-4400, Ext. 142.
6 FRIDAY SANDWICHED IN: What's All That Jazz? w/musician & educator Shenole Latimer 12:10 pm
FILM: *Beginners* (2011-104 min.). 7:30 p.m.
7 SATURDAY CONSTANCE GARROW DIAMOND: Art Advisory Council reception for the artist 2 - 4 p.m.
8 SUNDAY JAnoirARY FILM FESTIVAL: *The System* (1953) *Bad for Each Other* (1953) 1:30 pm.
9 MONDAY FILM: *Karen Cries On The Bus* (2011-98 min.). 7:30 p.m.
10 TUESDAY HYPERTENSION SCREENING: Free blood pressure screening by St. Francis Hospital. 11am - 2pm
TOPICAL TUESDAY: Patricia Ryan Lampl, co-author of *Love for Grown Ups: The Garter Brides' Guide to Marrying for Life...* 7:30 pm
11 WEDNESDAY BOOK DISCUSSION GROUP: *The Buddha in the Attic* by Julie Otsuka. 7:30 p.m.
12 THURSDAY DIRECTOR'S CUT: Film expert John Bosco will screen and discuss writer/director Mike Leigh's *Another Year* (2010-130 min.). 7:30 p.m.
13 FRIDAY SANDWICHED IN: Infinite Jest: Caricature and Satire from Leonardo to Levine with docent Vivian Gordon 12:10 p.m.
FILM: *Hanna* (2011-111 min.). 7:30 p.m.
14 SATURDAY NEXT CHAPTER: A discussion of current events. 10 a.m. to noon

E-READER LIBRARY: New Kindle, Nook, or iPad? Introduction to e-readers & the free library lending feature. Limited registration. Info: www.pwpl.org, click on readers blog under, Books & Reading. 2 pm

15 SUNDAY THE JESTERS OF JIVE: Kick off the Library's 120th Anniv. in high style w/this smokin' hot band. 3 pm.

16 MONDAY GREAT BOOKS DISCUSSION GROUP: Flaubert's *A Simple Heart*. 1 p.m.

AFTERNOON AT THE OPERA: *La Rondine* with professor James Kolb. 3 p.m.

17 TUESDAY JAnoirARY FILM FESTIVAL: *Women's Prison* (1954-80 min.). 7:30 p.m.

18 WEDNESDAY LIBRARY BOARD OF TRUSTEES meet. 7:30 p.m.

19 THURSDAY BOOK DISCUSSION GROUP: *Don't Sing at the Table* by Adriana Trigiani. 1:30 p.m.

3rd Thursdays @ 3: Caravaggio and Rembrandt with Ines Powell. 3 p.m.

20 FRIDAY SANDWICHED IN: Growing Older with Grace and Guts with Fred Chernow. 12:10 p.m.

SCRABBLE PLAYERS! Join us for a game. 2 - 4 pm.

LIVE@PWPL: Joe Iadanza Band. 7:30 p.m.

22 SUNDAY ANNUAL DILL JONES JAZZ TRIBUTE: The Gail Nelson Trio performs. 3 p.m.

23 MONDAY POWERPOINT TALK BY PHOTOGRAPHER MICHAEL MARGULIS in conjunction with his exhibition *Les Impressions de la Vie* 7:30 p.m.

24 TUESDAY JOBS, JUSTICE & OUR ECONOMIC FUTURE: Jon Weinstein moderates a forum. 7:30 p.m.

25 WEDNESDAY JAnoirARY FILM FESTIVAL: *Over-Exposed* (1956-80 min.). 7:30 p.m.

PORT WRITES: The group discusses their work and how to get it published. 8 p.m.

26 THURSDAY The library and the LI Music Hall of Fame present An Evening with Oscar Brand and Ervin Drake. Two veteran songwriters. 7:30 p.m.

27 FRIDAY SANDWICHED IN: The History of the NYPD with James Coll. 12:10 p.m.

FILM: *Super 8* (2011-111 min.). 7:30 p.m.

29 SUNDAY HOW TO ADVOCATE with playwright/activist Larry Kramer. The Social Action Committee of the Community Synagogue and the Library co-sponsor. 1:30 p.m.

30 MONDAY FILM: *Little Sparrows* (2010-89 min.), German short *A Lost and Found Box of Human Sensation* (2010-15 min.). 7:30 p.m.

31 TUESDAY JAnoirARY FILM FESTIVAL: *Odds Against Tomorrow* (1959-96 min.). 7:30 p.m.

516-883-4400 www.pwpl.org

PW Library Celebrates 120th Anniversary

(Continued from page 1)

ing the Anniversary at a new venue: the North Hills Country Club.

On April 24, the Health Advisory Council will present a lecture by David L. Katz, MD, MPH, FACPM, FACP, a recognized authority on nutrition and integrative medicine.

World Festival

The diverse cultures and nationalities represented in Port Washington over the past 120 years will be celebrated in a special World Festival/Anniversary Community Party on April 29 in conjunction with Landmark on Main Street.

The World Film Festival during May and June will feature a dozen films from around the globe.

For Teens, Too

TeenSpace is planning "Steampunk" art and design projects

in July and August. Steampunk is a popular contemporary design esthetic that has its roots in turn-of-the-century decorative styles – it is a visual connection with the time period of the library's founding.

Spend the day at the library on July 20 for "Then as Now: Imagining a Day in the Life of the Library in 1892."

Children's Illustrators Exhibit

November brings the extraordinary Children's Illustrators Exhibition.

From The Archives

The Local History Center plans to mount an archival exhibition about the library from 1892 to the present. It will also honor our four distinguished directors.

For more info about these events and more, please call 516-883-4440 or visit www.pwpl.org.

Thank You & Happy New Year!

Celebrating A New Year
with a Great Big
Thank You!

To Our
ADVERTISERS
READERS
and more than

100 DISTRIBUTING RETAIL LOCATIONS

2011 ADVERTISERS

Accents on Real Estates	Gold Coast Chiropractic	Port Sailing School
Acqua Seafood Restaurant	Gold Coast Family Dental	Port Washington Chamber of Commerce
Acuport Acupuncture	Greater Port Washington Business Improvement District	Port Washington Children's Center
Angler Fleet	Harbor Links Golf Course	Port Washington Spring Fling
Astoria Federal Savings	Hidden Gem Jewelry	Ralph's Ices
Ay Que Rico	Home Run Electric	Residents for a More Beautiful Port Washington
Ayhan Mediterranean Market	La Motta's Restaurant	Ron Harris Video
Azury Trading Corp	La Parma on the Bay	Sands Point Automotive
Barbatsuly & Sideris	LaCorte Family Auto	Sheehan & Company Accountants
Beautiful Skin	Laffey Edie Katz Assoc.	Sidney Segall Law Office
Bill's Automotive Service	Landmark on Main Street	South Shore Counseling
Botts Service Center	Mac Mind Computer Service	Spa on the Wharf
Calcano Custom Painting	Main Street Bakery	St. Stephens Fair
Chinese Tui Na Center	Main Street Wines	Stay & Clay
Christina Cheng Collection	Mainly Marketing & Design	Sullivan's Quay Restaurant
Coldwell Banker Real Estate	Manhattan Steamboat	TL Contracting
Delux Transportation	Massage Envy	Waterview Restaurant
Dr. Mary Chiropractic	My Little World Day Care	World Tae Kwon Do Academy
Dutch Connection	Om Sweet Om Yoga	Yoga Life
Bookeeping	Parker Design & Fabrication	Zimbardi Financial Group
Evergreen Salon	Piece of My Art	ZodiacGifts.com
Finn MacCools Restaurant	Port Beer	
Five J's Jewelers	Port Holiday Magic	
Fusion Wireless		
Get Baked		



Published by Mainly Marketing Design

PORT WASHINGTON CALENDAR STAFF

DAVE ALLEN
dave@pwcalendar.com
MARIE MARCELLINO
marie@pwcalendar.com

HAL LINDEN
pwbizhal@aol.com
LINDA CONSTANTINE
customerservice@pwcalendar.com

JIM KONATICH • SUSAN HERBST

24 Main Street, Suite 201 • PO Box 1439 • Port Washington, NY 11050

516-883-0313 • WWW.PWCALENDAR.COM

FEBRUARY CLOSING DATE: JANUARY 24